

Japan

Tomamu Hokkaido



Resort Highlights

- Spread over more than 145 acres in the heart of Mount Tomamu, this Club Med Resort invites you to discover the best powder snow slopes to enjoy a sensational mountain getaway.
- 4 meeting rooms in the village to welcome your teams (up to 50 people). *
- Share exciting winter teambuilding activities: from ski trips to hiking and mountain treks, to more water sports in the largest swimming pool covered waves from Japan *.
- Fresh seafood, premium Wagyu beef will provide your employees with an exciting culinary experience.



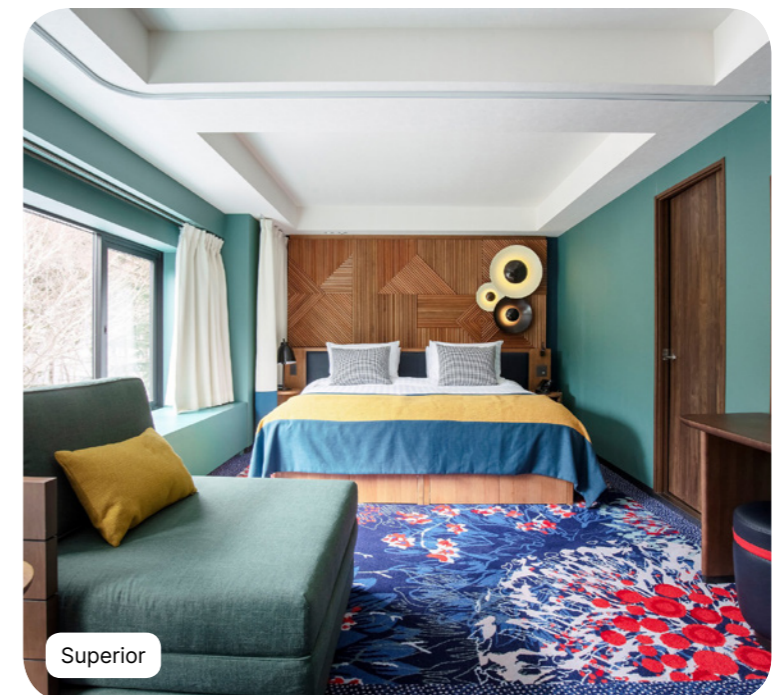
Summary

Accommodation	4
Corporate events	12
Sports & Activities	18
Swimming Pools	22
Restaurants & Bars	24
Practical Information	27



Accommodation

341 rooms



Superior



Name	Min. m ²	Highlights	Capacity
Family Superior Room - Mountain View	38	Mountain view	1 - 4
Superior Room	38		1 - 2
Junior Family Superior Room	42		1 - 3
Family Superior Room	38		1 - 4
Master Family Superior Room	64	children Area	1 - 5
Superior Room - Mobility Accessible	38		1 - 2
Interconnecting Junior Family Superior Rooms	84		1 - 6

Equipment

- Air conditioning
- Telephone
- TV Screen
- Wi-Fi Access
- Kettle - Coffee/tea making facilities
- Mini fridge at your disposal
- Iron and ironing board in the room
- Safe deposit box
- USB socket
- Heating
- Electricity : 100-127 V

Bathroom

- Slippers
- Hair dryer
- Magnifying mirror
- Amenities : shampoo, shower gel, body lotion

Services

- Luggage service
- Laundry service (extra charge)

Deluxe



Name	Min. m ²	Highlights	Capacity
Deluxe Room - Forest View	38	Forest view , Lounge area	1 - 3

Equipment

- Air conditioning
- Baby bed (Must be pre-booked)
- Club Med Baby Welcome
- Telephone
- Sofa
- TV Screen
- Wi-Fi Access
- Kettle - Coffee/tea making facilities
- Iron and ironing board in the room
- Safe deposit box
- USB socket
- Heating
- Electricity : 100-127 V

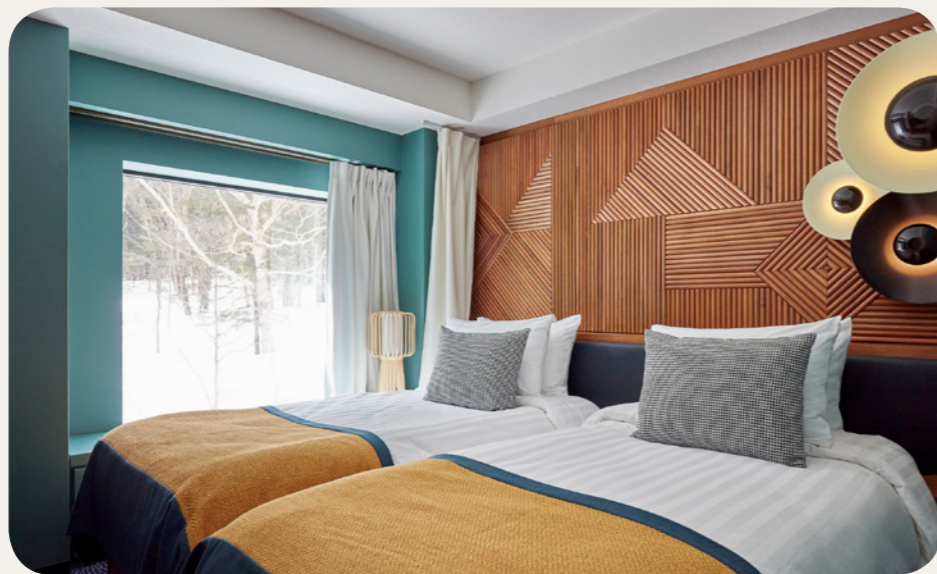
Bathroom

- Bathtub
- Bathrobe
- Slippers
- Hair dryer
- Magnifying mirror
- Amenities : shampoo, shower gel, body lotion
- Amenities accessories : vanity kit, manicure kit, etc.

Services

- Luggage service
- Minibar (non-alcoholic drinks) - refilled weekly
- Pool towel
- Laundry service (extra charge)

Suite



Name	Min. m ²	Highlights	Capacity
Family Suite	55	Fir Tree View, Lounge area, Children's Separate Room	1 - 5
Master Family Suite – Duplex	72	Split-level family room, Children's Separate Room, Living Room	1 - 5

Equipment

- Air conditioning
- Baby bed (Must be pre-booked)
- Club Med Baby Welcome
- Telephone
- TV Screen
- Wi-Fi Access
- Espresso machine
- Kettle - Coffee/tea making facilities
- Iron and ironing board in the room
- Safe deposit box
- USB socket
- Heating
- Electricity : 100-127 V

Bathroom

- Bathtub
- Shower
- Bathrobe
- Slippers
- Hair dryer
- Magnifying mirror
- Amenities : shampoo, shower gel, body lotion
- Amenities accessories : vanity kit, manicure kit, etc.
- Bidet

Services

- Luggage service in room
- Inclusive of room service for continental breakfast
- Minibar (non-alcoholic drinks) - refilled daily
- Turn down service
- Pool towel
- Laundry service (extra charge)
- Cleaning on demand

Corporate events

Convention, seminar, privatisation, incentive, team building...
Whatever your needs, our experts will work with you from A to Z
to design your event.



Meeting rooms



Meeting Room / Capacity	In U shape	In conference	In classroom	In theater
Théâtre - Espace Ouvert	-	-	-	250
Kakushin Suru 60 m2	30	30	40	50
Sozo-Tekina 64 m2	30	30	40	50

Included equipment

- Video projector & projection screen
- Wifi
- Paperboard
- Pencil and paper pad
- Mineral water

Our extra offers

From private cocktails to team building and coffee breaks...
Create an event that reflects your image !



Team Buildings & Events*

To federate your teams and make them spend unforgettable moments, we offer very diversified concepts, tailor-made events and original entertainments to meet your expectations.

Cocktails and Coffee breaks

Because the success of your events also depends on private, convivial moments, we offer a range of cocktail and coffee breaks services exclusively for you. On request, please contact us.



Sports & Activities



Winter Sports

	Group Lessons	Free Access	At extra cost course	Min. age (years)
Ski	All levels / Free access			4 years old
Snowboard	Lessons for all levels (Japanese / English) / All levels			4 years old
Hiking*	Free access		✓	11 years old

*on demand
**Depending on weather conditions



Land Sports & Leisure

	Group Lessons	Free Access	At extra cost course	Min. age (years)
Fitness	Group lessons for all levels / Free access			16 years old
Entertainment		✓		
Swimming Pool		✓		
Activities in the ski station*			✓	
Pool table*			✓	
Snow mobile*			✓	
Japanese cooking class				
Excursion*		✓	✓	

*on demand
**Depending on weather conditions

Swimming Pools

Indoor swimming pool Mina Mina

Indoor Pool



Opening dates: 1st December 2024 to 1st April 2025.

G.Ms are offered free access to "Mina Mina Beach", which is the largest indoor wave pool in Japan. It is located right in front of the Resort.

Children are under the supervision of their parents or an accompanying adult.

Heated



Restaurants & Bars



Bars

Unkai bar

Main bar

The Nest Bar

Wine Bar

Restaurants



Itara

Main Restaurant

940 seats inside /

Savour a variety of international and Japanese delights, including the freshest fish, from our main buffet restaurant. With 4 distinct spaces, each inspired by Hokkaido regions, the setting will surely surprise. Bucolic Valley, Farmhouse, Sea of clouds, and Rays of sun, with the Unkai Terrace (available in summer only), each offers a unique gastronomic adventure to share.

Haku

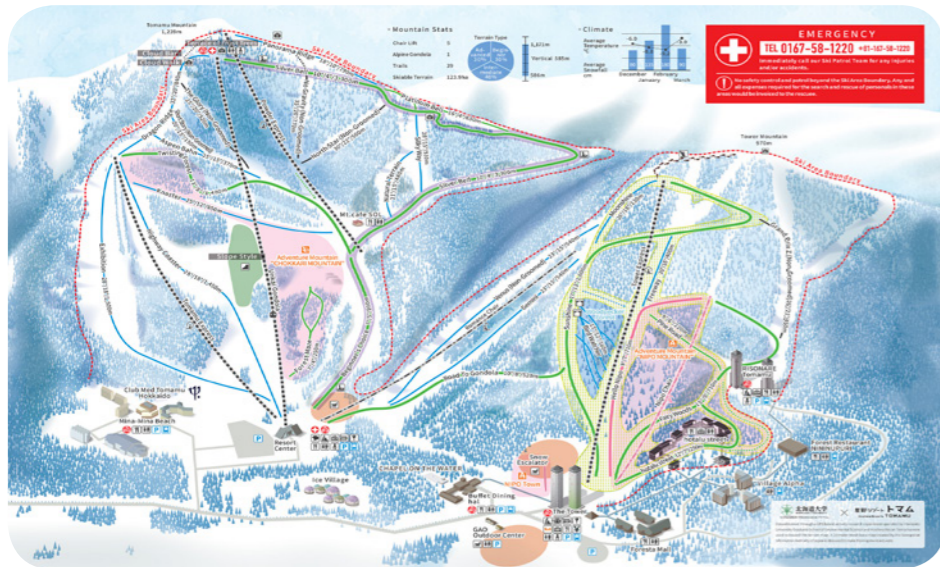
Specialty Restaurant

136 seats inside /

Imagine the scent of fresh yakiniku steaming off the grill. Haku, our Hokkaido Resort speciality restaurant, prepares this beef Japanese delicacy to perfection paired with a selection of delicious side dishes to complement. Open for dinner, enjoy an authentic dining experience with a design inspired by Japanese indigenous tribes to cap off an unforgettable day.



Ski area map



TOMAMU

1171m

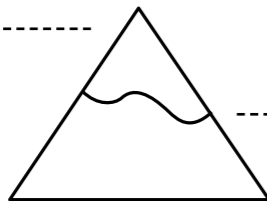
Maximum altitude

540m

Ski-in / Ski-out resort

586m

Minimum altitude



Alpine ski slopes

Number of ski slopes



Freeride Zone(s)



Practical Information

Address

CLUB MED TOMAMU HOKKAIDO
NAKA-TOMAMU
 Hokkaido
 079-2204, Japan

Hygiene & Safety

Safe Together. Club Med has implemented new hygiene and safety measures to offer you peace of mind and a most joyful experience.

CHECK-IN/CHECK-OUT

Times of arrival/departure from the Resort

For GM arrival with stay package / stay package inclusive transfer only (flight not booked with Club Med):

For all stays, arrival between 3pm and 8pm. G.M®s who arrive early may be able to have lunch at extra cost, subject to availability.

Availability of rooms: between 3pm and 8pm.

Rooms to be vacated by 10am on day of departure, for departure from the Resort by 3pm (breakfast and lunch included).

Should any of these times change, the revised times will be given in your "Holiday Rendez-Vous".

For GM arrival with flights booked with Club Med:

- Room to be allocated as soon as possible according to availability

- Food & Beverage service access to resort facilities and F&B services are included from arrival until departure time

Nearest arrival points

✈ Obihiro airport (70 mins.) ; Chitose airport (110 mins.) ; Chitose airport (120 mins.) ; Chitose Airport
 - Private transfer (60 mins.)

🚆 Tomamu railway station (5 mins.)