

Indonesia

# Bintan Island



## Resort Highlights

- A serene destination for wellness seminars in a resort combining modernity and Asian tradition.
- Modular meeting rooms to accommodate your teams (up to 200 people)\*.
- Federate on the green at the resort or on the Ria Bintan Golf Club, one of the best courses in Southeast Asia\*.
- Celebrate success during a gala evening that is sure-to-be at the heart of an exotic setting\*.
- Free access : swimming pool, kayak, weight room



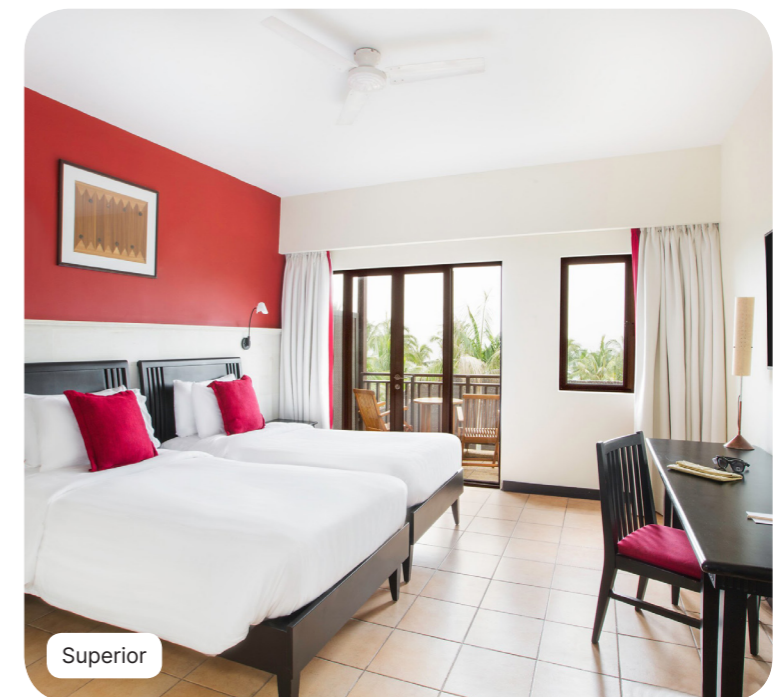
# Summary

<b>Accommodation</b>	<b>4</b>
<b>Corporate events</b>	<b>12</b>
<b>Sports &amp; Activities</b>	<b>18</b>
<b>Swimming Pools</b>	<b>22</b>
<b>Club Med Spa by Sothys*</b>	<b>24</b>
<b>Excursions*</b>	<b>25</b>
<b>Restaurants &amp; Bars</b>	<b>26</b>
<b>Practical Information</b>	<b>28</b>



# Accommodation

308 rooms



## Superior



Name	Min. m <sup>2</sup>	Highlights	Capacity
Superior Room - Sea View, Balcony	34	Sea View, Furnished balcony	1 - 3
Interconnecting Superior Rooms - Sea View, Balcony	68	Sea View, Furnished balcony	2 - 4
Superior Room - Balcony	34	Furnished balcony	1 - 3
Superior Room - Mobility Accessible	39	Furnished balcony	1 - 2
Interconnecting Superior Rooms - Balcony	68	Furnished balcony	2 - 4

### Equipment

- Air conditioning
- Baby bed (Must be pre-booked)
- Club Med Baby Welcome
- Telephone
- TV Screen
- Wi-Fi Access
- Kettle - Coffee/tea making facilities
- Mini fridge at your disposal
- Safe deposit box
- USB socket
- Electricity: 220-240 V

### Bathroom

- Shower
- Separate toilets
- Slippers
- Hair dryer
- Amenities : shampoo, shower gel, body lotion

### Services

- Luggage service
- Laundry service (extra charge)
- Cleaning on demand

## Deluxe



Name	Min. m <sup>2</sup>	Highlights	Capacity
Deluxe Room - Sea View, Balcony	34	Sea View, Furnished balcony	1 - 3
Deluxe Room - Sea View, Terrace	41	Sea View, Lounge area, Furnished terrace	1 - 3
Interconnecting Deluxe Rooms - Sea View, Balcony	68	Sea View, Furnished balcony	2 - 4
Interconnecting Deluxe Rooms - Sea View, Terrace	82	Sea View, Lounge area, Furnished terrace	2 - 4

### Equipment

- Air conditioning
- Baby bed (Must be pre-booked)
- Club Med Baby Welcome
- Telephone
- TV Screen
- Wi-Fi Access
- Kettle - Coffee/tea making facilities
- Iron and ironing board in the room
- Safe deposit box
- USB socket
- Electricity: 220-240 V

### Bathroom

- Shower
- Twin vanity sinks
- Separate toilets
- Bathrobe
- Slippers
- Hair dryer
- Magnifying mirror
- Amenities : shampoo, shower gel, body lotion
- Amenities accessories : vanity kit, manicure kit, etc.

### Services

- Luggage service
- Minibar (non-alcoholic drinks) - refilled weekly
- Beach towel
- Laundry service (extra charge)
- Cleaning on demand

## Suite



Name	Min. m <sup>2</sup>	Highlights	Capacity
Suite - Sea View, Terrace	80	Sea View, Separate Living Room, Furnished terrace	1 - 3

### Equipment

- Air conditioning
- Sunlounger
- Baby bed (Must be pre-booked)
- Club Med Baby Welcome
- Telephone
- Sofa
- TV Screen
- Wi-Fi Access
- Espresso machine
- Kettle - Coffee/tea making facilities
- Iron and ironing board in the room
- Umbrella
- Safe deposit box
- USB socket
- Electricity: 220-240 V

### Bathroom

- Bathtub
- Twin vanity sinks
- Separate toilets
- Bathrobe
- Slippers
- Hair dryer
- Magnifying mirror
- Amenities : shampoo, shower gel, body lotion
- Amenities accessories : vanity kit, manicure kit, etc.
- Shower

### Services

- Upgrade transfer for G.M® with transfer package
- Inclusive of room service for continental breakfast
- Priority booking at Club Med Spa
- Priority booking at the Speciality Restaurant
- Minibar (non-alcoholic drinks) - refilled daily
- Luggage service
- Turn down service
- Beach towel
- Laundry service (extra charge)
- Cleaning on demand

# Corporate events

Convention, seminar, privatisation, incentive, team building...  
Whatever your needs, our experts will work with you from A to Z  
to design your event.



## Meeting rooms



Meeting Room / Capacity	In U shape	In conference	In classroom	In theater
Riau 1 6.23 × 8m / 50 m <sup>2</sup>	20	20	20	25
Riau 1+2+3 8 × 8m / 178 m <sup>2</sup>	70	75	80	150
Riau 2 8 × 8m / 64 m <sup>2</sup>	20	20	20	25
Riau 3 8 × 8m / 64 m <sup>2</sup>	20	20	20	30
Théâtre - Espace Clos	-	-	-	250

### Included equipment

- Video projector & projection screen
- Wifi
- Paperboard
- Pencil and paper pad
- Mineral water



## Our extra offers

From private cocktails to team building and coffee breaks...  
Create an event that reflects your image !



### Team Buildings & Events\*

To federate your teams and make them spend unforgettable moments, we offer very diversified concepts, tailor-made events and original entertainments to meet your expectations.

### Cocktails and Coffee breaks

Because the success of your events also depends on private, convivial moments, we offer a range of cocktail and coffee breaks services exclusively for you. On request, please contact us.



# Sports & Activities



## Water Sports

	Group Lessons	Free Access	At extra cost course	Min. age (years)
Kayak		Free access		6 years old
Snorkeling	Initiation group lessons			8 years old
Stand up Paddle		Free access		14 years old

\*on demand  
\*\*Depending on weather conditions



## Land Sports & Leisure

	Group Lessons	Free Access	At extra cost course	Min. age (years)
Golf	All levels			8 years old
Padel		✓		6 years old
Yoga	Initiation group lessons / Group lessons for all levels			8 years old
Climbing	Group lessons for all levels			6 years old
Trapeze & Circus	All levels			4 years old
Archery	Initiation			6 years old
Fitness	Group lessons for all levels / Free access			16 years old
Tennis	All levels			4 years old
Team sports	Free access			4 years old
Entertainment		✓		
Swimming Pool	Group lessons for all levels / Free access			8 years old
Badminton	Free access			
Cookery lessons	All levels			
Petanque (boules)	Free access			
Pool table	Free access			
Squash	Free access			
Table tennis	Free access			
Excursion*		✓	✓	

\*on demand

\*\*Depending on weather conditions

\*\*\* Pre-bookable green fee packages at extra cost

# Swimming Pools



## Main swimming pool

Outdoor Pool



This overflow freshwater swimming pool has two swimming areas and is equipped with deckchairs, parasols and showers.

Children are under the supervision of their parents or an accompanying adult.

**Depth (min/max): 1.2m / 1.7m**

## Club Med Spa by Sothys\*



Sothys, a deusa da beleza, confia o seu segredo a homens e mulheres.

No coração da região de Corrèze, em França, uma estética de vanguarda é constantemente renovada no jardim botânico. Descubra a digi-esthétique®, um método de massagem exclusivo.

Cada villa spa é cuidadosamente construída ao longo do manguezal para preservar o seu ecossistema. Admire o manguezal e a vista para o Mar da China Meridional e deixe-se mimar pelas mãos experientes dos nossos terapeutas ao som das ondas.



\*on demand

## Excursions\*



### **Nature getaways :**

Mangrove Discovery Tour / Fireflies night Tour / Sunset cruise

### **Connecting with culture :**

North Bintan Heritage Discovery / Sea Fun Fishing Adventure

### **Sense of adventure :**

Ski scooter ride / Ski scooter ride

:

Tailored

\*on demand

## Restaurants & Bars



### Bars

#### **The Santai**

25 seats inside /

Main bar

75 seats inside / 50 seats outside

#### **The Panorama**

Pool bar

#### **The Matahari**

Beach Bar

61 seats outside

## Restaurants



#### **The Waterfall**

Main Restaurant

450 seats inside / 20 seats outside

Savour a selection of hearty or healthy foods from The Waterfall buffet restaurant while you take in stunning sea views through grand-scale windows. Located above the swimming pool, the restaurant offers you a myriad of local specialties and international dishes, including Japanese, Indian, Chinese, Italian, American and French cuisine, as well as low-calorie dishes. You will appreciate discovering the new recipes conceptualised by chef Samantha Gowing.

#### **The Terrace**

Other Restaurant

60 seats inside / 120 seats outside



The Terrace sprawls out onto a breezy outdoor sitting area where South China Sea views are awe-inspiring. Whether for a savoury late breakfast, a late lunch after 18 holes on the nearby golf course, or reservations-only dining on select evenings, you'll enjoy an unforgettable meal.

#### **Pondok Ria**

snack restaurant



Enjoy a daily teatime snack as you catch up with loved ones and relax, our new food stall offers cold and hot dishes with a combination of Asia, local and western cuisine.

# Practical Information



Front desk Réception	Nursery Infirmierie	Baby corner Biberonnerie	Yoga	Flying Trapeze Trapéze	Squash	Volleyball
Rooms Chambres	La boutique	Kid's Club	Fitness	Climbing wall Mur d'escalade	Tennis	Basketball
Restaurant	Meeting Room Salle de réunion	Theatre Théâtre	Archery Tir à l'arc	Kayak	Table tennis Tennis de table	Soccer Football
Bar	Discovery Center Espace Découverte	Pool Piscine	Bocceball Pétanque	Paddle	Badminton	
Snack	Amazing Family Corner	Club Med Spa	Golf	Snorkeling	Padel	

## Address

### CLUB MED BINTAN ISLAND

LOT A11 JALAN PERIGI RAYA, LAGOI NORTH BINTAN UTARA, Bintan  
29152, Indonesia

No minimum age

## Hygiene & Safety

Safe Together. Club Med has implemented new hygiene and safety measures to offer you peace of mind and a most joyful experience.

## CHECK-IN/CHECK-OUT

Times of arrival/departure from the Resort

For GM arrival with stay package / stay package inclusive transfer only (flight not booked with Club Med):

For all stays, arrival between 3pm and 8pm. G.M@s who arrive early may be able to have lunch at extra cost, subject to availability.

Availability of rooms: between 3pm and 8pm.

Rooms to be vacated by 10 am on day of departure, for departure from the Resort by 3 pm (breakfast and lunch included).

Should any of these times change, the revised times will be given in your "Holiday Rendez-Vous".

For GM arrival with flights booked with Club Med:

- Room to be allocated as soon as possible according to availability
- Food & Beverage service access to resort facilities and F&B services are included from arrival until departure time

## Nearest arrival points

Transfer between Bintan Island and Tanjung Pinang Airport (100 mins.)

Transfer between Bintan Ferry Terminal and Club Med Bintan ; Transfer between Bintan Island and Tanjung Uban Ferry Terminal (55 mins.)