

Club Med Joyview Heilongtan  
Resort  
地中海邻境·黑龙滩度假村

I ♥ Club Med

Club Med   
地中海·邻境



黑龙滩度假村  
HEILONGTAN RESORT

# 目录

1

目的地简介

2

地中海俱  
乐部品牌  
介绍



3

地中海邻境  
黑龙滩度假村

4

不可错过的  
体验



# CONTENTS

1

Destination  
Profile

2

Brand  
Introduction

3

Club Med  
Joyview  
Heilongtan  
Resort

4

Must-try  
Experience





# 1 目的地简介 Destination Profile



## 四川成都

- 距度假村最近的国家级中心城市

## 眉山黑龙滩

- 度假村行政区域属地

## 天府之国，安逸自在

成都，简称「蓉」，别称锦城，自古有「天府之国」的美誉，是首批国家历史文化名城，古蜀文明发祥地，中国最佳旅游城市。成都历史悠久，周太王“一年成聚，二年成邑，三年成都”，故名成都，是四川省省会、国家中心城市，成渝地区双城经济圈核心城市，区域经济中心、科技中心、世界文化名城和国际门户枢纽。

气候宜人：北亚热带湿润气候，年平均气温14.4℃，湿度适宜，雨水充沛，四季，分明，空气清新。

水文丰富：下辖黑龙滩水库，蓄水量3.6亿立方米，担负着120万亩农田灌溉和200多万人口饮用水供给。

生物资源：黑龙滩风景区林木绿化5062公顷，森林覆盖率达38.4%，植被覆盖率达98.4%，栽果林7686亩，三百余种植被；黑龙滩风景区湖中有野鸭、白鹭、灰鹤、天鹅等上百种鸟类栖息。

## 天府南大门，诗意灵动

黑龙滩，位于四川成都之南眉山仁寿。眉山古称「眉州」，位于四川盆地成都平原西南部，北接成都市，南连乐山市，东邻自贡市，西接雅安市，四川省最年轻的地级市，是国家级天府新区、成都经济区和峨眉山国际旅游区的重要组成部分。拥有「苏迷朝圣地」三苏祠、「最美桌山」瓦屋山、「长寿养生福地」彭祖山、「川西第一海」黑龙滩、「禅度佛国」老峨山、「中国竹编展示中心」国际竹艺城、「东坡初恋地」中岩寺、「天然氧吧」七里坪、「穿越盛世」水街等著名景区，被评为亚太地区（二三线城市）首选旅游目的地、中国最美生态文化旅游城市。

黑龙滩风景区，北距成都市68公里，西邻眉山20公里，是一座人工湖泊，湖岸边长310公里，南北长25公里，水面23.6平方公里，被誉为「川西第一海」，湖内85座群岛星罗棋布，似水上盆景。

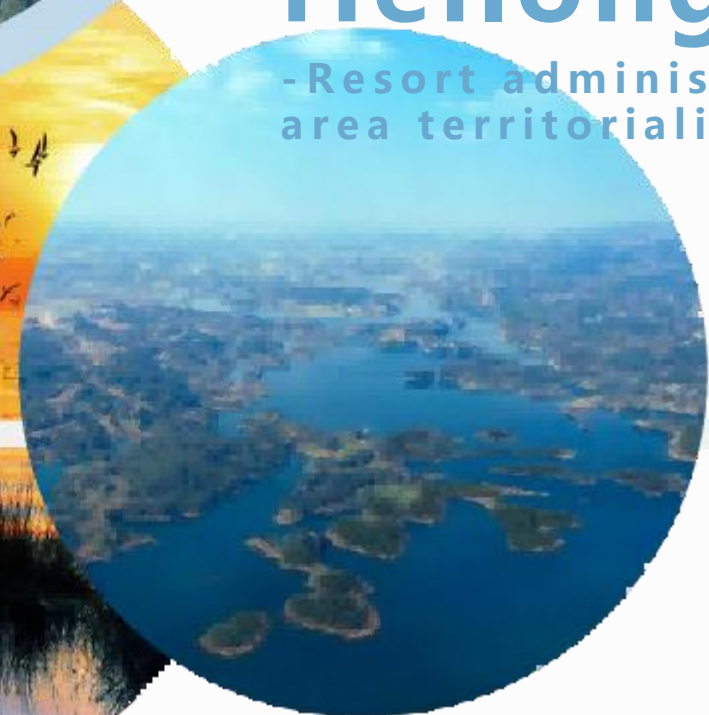


# Chengdu, Sichuan

- Closest national center city to the resort

# Meishan Heilongtan

- Resort administrative area territoriality



## Land of Abundance, Serenity and Comfort

Chengdu, abbreviated as "Rong" and also known as "Jincheng," has long been celebrated as the "Land of Abundance." It is one of China's first batch of national historical and cultural cities, the birthplace of ancient Shu civilization, and one of the best tourist cities in China.

Chengdu has a long history. According to legend, King Tai of the Zhou dynasty declared, "In one year, a settlement was formed; in two years, it became a town; in three years, it developed into a city," thus giving it the name Chengdu. It is the capital of Sichuan Province, a national central city, a core city in the Chengdu-Chongqing economic circle, and a regional economic, technological, cultural, and international gateway hub.

**Pleasant climate:** humid climate of northern subtropical zone with an average annual temperature of 14.4°C, suitable humidity and abundant rainfall. There are four distinct seasons and fresh air.

**Hydrological richness:** under the jurisdiction of Heilongtan Reservoir, water storage capacity of 360 million cubic meters, burdened with 1.2 million mu of farmland irrigation and more than 2 million people drinking water supply.

**Biological resources:** Heilongtan Scenic Area forest greening 5062 hectares, forest coverage of 38.4%, vegetation coverage of 98.4%, planted 7686 acres of fruit forests, more than three hundred kinds of vegetation.

Heilongtan Scenic Area is inhabited by hundreds of birds such as wild ducks, egrets, gray cranes and swans.

## South Gate of Tianfu, Poetic and Spiritual

Heilongtan is located in Meishan Renshou, south of Chengdu, Sichuan Province. Meishan ancient name "Meizhou", is located in the southwest of Chengdu Plain, Sichuan Basin, north of Chengdu City, south of Leshan City, east of Zigong City, west of Ya'an City, the youngest prefectural-level city of Sichuan Province, is the national Tianfu New Area, Chengdu Economic Zone and the big Emei International Tourism Zone is an important part. With "Su fans pilgrimage site" Sansu Temple, "the most beautiful table mountain" Waya Mountain, "longevity and health resort" Pengzu Mountain, "the first sea in Western Sichuan" Black Dragon Beach, "Zendu Buddha Country" Lao'e Mountain, "China Bamboo Weaving Exhibition Center" International Bamboo Art City, "Dongpo's First Love Place" Zhongyan Temple, The famous scenic spots such as "Natural Oxygen Bar" Qiliping, "Through the Century" Water Street, etc., have been rated as the preferred tourist destinations in the Asia-Pacific region (second- and third-tier cities), and China's most beautiful ecological and cultural tourism city.

**Heilongtan resort:** 68 kilometers north of Chengdu City, 20 kilometers west of Meishan, is an artificial lake, the lake shore length of 310 kilometers, 25 kilometers north-south, 23.6 square kilometers of water, known as "the first sea in western Sichuan. Inside the lake, 85 archipelagos are scattered, like a bonsai on the water.

# 天府都市圈南大门 川渝双城中心经济圈3小时可达



成都出发约1.5小时  
重庆出发约3小时



贵阳出发约3小时




广州出发约26个航班/天  
深圳出发约30个航班/天  
北京出发约60个航班/天  
上海出发约50个航班/天




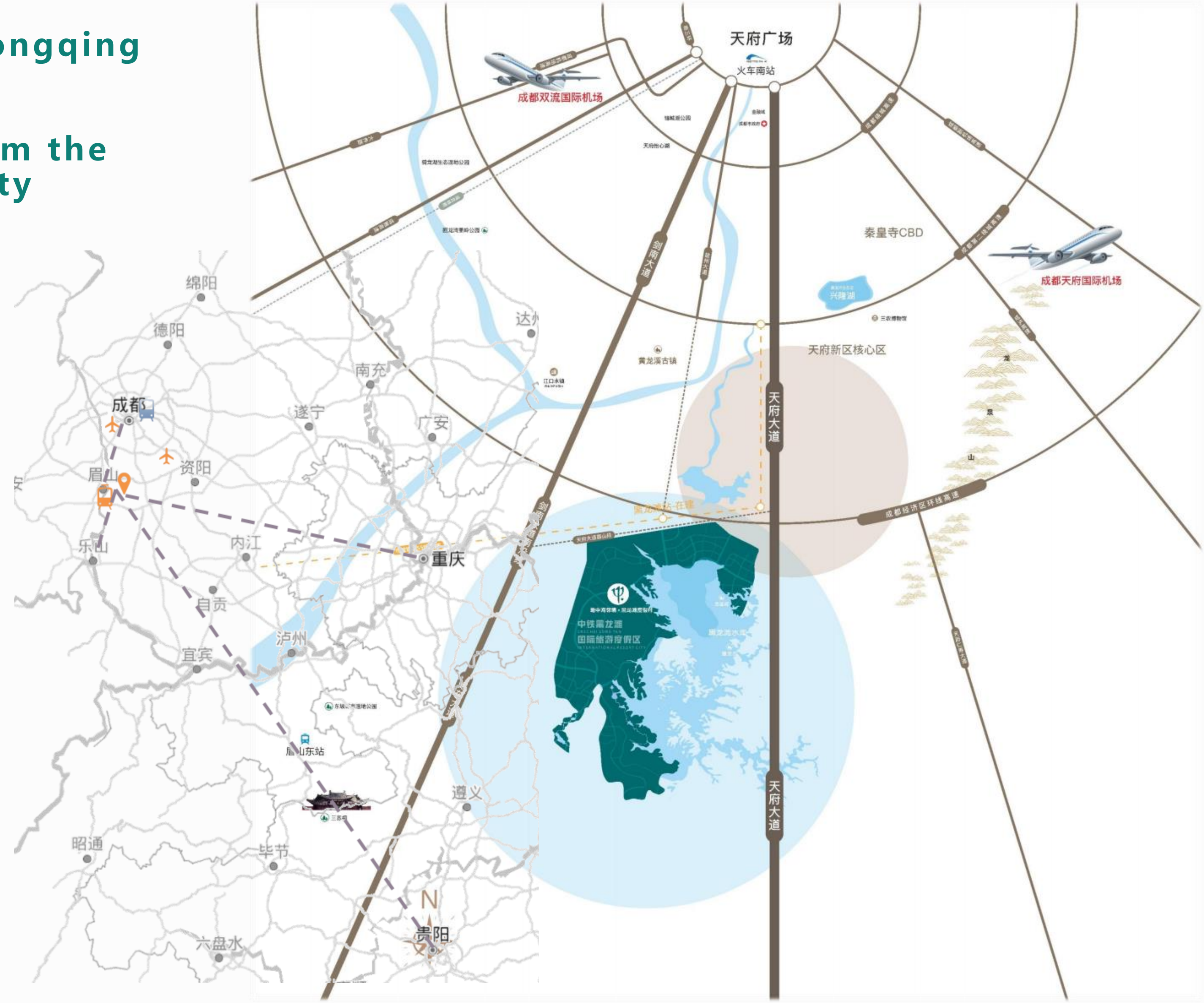
# Gateway to the Southern Chongqing Metropolitan Area

## Reachable within 3 hours from the Chengdu-Chongqing Twin-City Economic Circle

 About 1.5 hours from Chengdu  
About 3 hours from Chongqing

 About 3 hours from Guiyang

 About 26 flights/day from Guangzhou  
About 30 flights/day from Shenzhen  
About 60 flights/day from Beijing  
About 50 flights/day from Shanghai







## 黑龙滩风景区

黑龙滩地处成都、眉山、仁寿三大城市核心生态腹地，北距天府新区20公里，东距天府国际机场30公里，西距眉山15公里，南距仁寿县城10公里。黑龙滩水库属引蓄式人工湖泊，1970年开工建设，1972年大坝合拢蓄水，库区湖面面积23.6平方公里，南北长25公里，东西长13公里，湖岸线310公里，水库最大库容3.6亿立方米，正常库容3.0亿立方米，85座岛屿星罗棋布，岛上绿树成荫，植被覆盖率98.4%，森林覆盖率67%。

1986年黑龙滩被评定为省级风景名胜区，2014年被评为国家4A级景区，2019年被评为国家级湿地公园，是眉山市中心城区、仁寿县全域、东坡区、彭山区及乐山井研县部分区域300余万人的饮用水水源地，仁寿全域、井研和简阳部分区域130万亩农业灌溉用水。



## 中铁黑龙滩国际旅游度假区

中铁黑龙滩国际旅游度假区位于黑龙滩镇光明大道，占地面积3.4万亩，中铁黑龙滩是超大型综合度假区，让人在重拾乡趣森活的同时拥有城市级的配套，乐享美好度假生活：大而全，上万亩规模，“吃、住、行、游、购、娱、商、养、学、闲、情、奇”旅游十二要素应有尽有；专而精，聚焦文化、旅游、大健康三大产业，以休旅、农旅、体旅、康旅四大主题，定位休闲度假宝地、水上运动圣地、田园康养福地；特而新，引入了以“地中海俱乐部”为代表的全球度假领导品牌、以“火车来斯”为代表的主题文化体验品牌，走出了以“中铁拾壹”为代表的自主餐饮品牌，创新了以“诗里阡陌”为代表的乡村振兴产业品牌。

# HEILONGTAN SCENIC AREA



Heilongtan is located in the core ecological hinterland of the three major cities of Chengdu, Meishan and Renshou, 20 kilometers away from Tianfu New Area in the north, 30 kilometers away from Tianfu International Airport in the east, 15 kilometers away from Meishan in the west and 10 kilometers away from Renshou County in the south.

Heilongtan Reservoir is a diversion and storage type artificial lake, construction began in 1970, the dam was closed in 1972 to store water, the lake area of the reservoir area of 23.6 million square meters. 6 square kilometers, 25 kilometers from north to south, 13 kilometers from east to west, 310 kilometers of the lake shoreline, the maximum capacity of the reservoir 3.6 billion cubic meters, the normal capacity of 3.6 billion cubic meters. The maximum capacity of the reservoir is 360 million cubic meters, with a normal capacity of 3.0 billion cubic meters. The reservoir has a maximum capacity of 360 million cubic meters and a normal reservoir capacity of 3.0 billion cubic meters. 85 islands are dotted around the lake, and the islands are covered with greenery, with a vegetation cover rate of 98.4% and a forest cover rate of 9.4%. The vegetation cover rate is 98.4% and the forest cover rate is 67%.

The Heilongtan was appraised as a provincial scenic spot in 1986, a national 4A-level scenic spot in 2014 and a national wetland park in 2019, and is the source of drinking water for more than 3 million people in the downtown area of Meishan City, the whole area of Renshou County, Dongpo District, Pengshan District and part of Jinyan County in Leshan, as well as the water source for 1.3 million acres of irrigation water for the whole area of Renshou, and for part of Jinyan and Jinyang.

## CREC HEILONGTAN INTERNATIONAL TOURISM RESORT



Resort is located in Guangming Avenue of Heilongtan Town, covering an area of 3.4 million acres. Covering an area of 34,000 acres, CREC Heilongtan International Tourism Resort is a super-large integrated resort area, which allows people to enjoy a good vacation life with city-level facilities while regaining the fun of living in the countryside: large and comprehensive, with a scale of tens of thousands of acres and all the twelve essential elements of tourism: "food, housing, transportation, tourism, shopping, recreation, business, health, education, leisure, love, and curiosity" ; specialized and refined, with a focus on three major industries, namely culture, tourism, and four themes, namely leisure travel, agricultural travel, physical travel, and recreational travel. Specialized and refined, focusing on the three major industries of culture, tourism and health, with four themes of leisure travel, agricultural travel, sports travel and recreational travel, positioning itself as a leisure and vacation resort, a water sports mecca, and a blessed place of rural recreation; special and new, introducing the leading global vacation brand represented by "Club Med" , the theme cultural experience brand represented by "Nice Train" , the independent catering brand represented by "Shi Tang", and the innovative rural revitalization industry brand represented by "Poetry Strand".

# 2地中海俱乐部品牌介绍 Brand Introduction



# Club Med 地中海俱乐部的品牌愿景

*生活的目标就是要快乐  
这里就是快乐的地方  
此刻让我们尽情快乐吧*

Gérard Blitz  
Club Med创始人

# What is Club Med's vision

*“The purpose of life is to be happy. The place to be happy is here. The time to be happy is now” ... and tomorrow*

*Gérard Blitz*

*Club Med Founder*

# Club Med 地中海俱乐部的品牌使命

70多年以来, 品牌致力于

**为我们的宾客每天带来  
难忘的快乐瞬间**



# What is Club Med's Mission

For over 70 years, *our mission is*  
***to create every day***  
***unforgettable moments of***  
***happiness for our clients.***



# Club Med 地中海俱乐部品牌历程





# Club Med Milestone

Club Med 

Club Med  
Brand Superior



Create the "all-inclusive" holiday concept

Built the first ski resort in Switzerland

Creation of the buffet, that would become a worldwide standard

Opened the first Mini Club

Creation of the largest Sport's Academy in the world

The portfolio expanded in APAC, with Cherating in Malaysia

First cruise for our legendary French sailing yacht: Club Med 2

Club Med entered China Market

First ski resort in China – Club Med Yabuli  
First sun resort in China – Club Med Guilin

Set up partnerships with Fosun

Club Med Beidahu opened

Club Med Joyview Anji opened

Club Med Lijiang, Changbaishan  
Club Med Joyview  
Thousands Island bring happiness to global families

Club Med Urban Oasis Xianlin & Taicang opened;

2023

1950

1957

1965

1967

1970

1979

1992

2003

2010-2013

2015

2016

2018

2021-2022

FOSUN 复星

# 地中海俱乐部旗下4条产品线

Club Med   
地中海·邻境

Club Med   
地中海·白日方舟

Club Med   
地中海俱乐部

Club Med   
EXCLUSIVE · COLLECTION

## 定义\产品标准

选址于大型城市集群的近郊地区，地中海·邻境位于风景秀丽的目的地，为城市集群消费者提供周边短途度假体验。体验形式灵活，可选择“房间含早”或“一价全包”形式。

地中海俱乐部精神在城市中的延伸 - 源自地中海俱乐部的高端城市度假酒店品牌，为中国城市人群量身定制的一站式城市主题度假体验。体验形式灵活，可选择“房间含早”或“一价全包”形式。

Club Med 标志性精致“一价全包”度假体验。多元化的国际G.O团队让客人尽享全球美食，丰富多样的活动及娱乐，还有儿童托管等亲子服务。

Club Med的奢华产品线。度假村均选址世界上最美风景地，以私密感和细致周到的定制化服务，给予宾客无与伦比度假体验。

## 目标客群

大城市集群中寻求短途度假体验的中产家庭与年轻人群；寻求会奖团队解决方案的企业用户

热爱城市度假的当地家庭与年轻一族；来自全球各地乐于探索城市的游客及商旅人士

来自精英阶层的富裕家庭，无孩旅行者，以及入境游客；关注体验的丰富性，追求度假品质

情侣、家庭或朋友群体对度假期间的服务和舒适度有极高的要求，期望拥有非同凡响的度假体验

## 品牌标语

「近」享自在假期

城市度假，此时此地

这就是自由自在

Luxury is the Art of Living

# Club Med's 4 product lines

**Club Med**   
JOYVIEW

**Club Med**   
URBAN OASIS

**Club Med** 

**Club Med**   
EXCLUSIVE COLLECTION

## Positioning

Located at the suburban areas of megacity clusters, Joyview explores and brings the beautiful destinations to the cluster of megacity dwellers, providing short haul holiday experience. Flexible options for both "Room & Breakfast" and "All-Inclusive" services

Located at core cities, Urban Oasis is an upscale city resort brand, offering one-stop city staycation, tailor-made for urban population in China cities. Flexible options for both "Room & Breakfast" and "All-Inclusive" services

Club Med signature all-inclusive holiday. International G.O team can offer customers global cuisines, diverse entertainment and childcare services

Club Med luxury product line. Resorts are all located at the most famous scenic spots. It provides the guests unparalleled holiday experience through exclusive and detailed-oriented customized service

## TA

China middle class families and young adults in megacity clusters looking for short trip experience; enterprises who look for MICE solution

Local families and young adults looking for city staycations;  
Worldwide tourists and business travelers seek city exploration

Affluent families from Tier 1 and new Tier 1 cities  
Care about experience diversity and holiday quality

Couples, families or friends  
High standard for holiday service and comfort level, look forward to remarkable experience

## Brand slogan

Enjoy a relaxed nearacation

Urban staycation, right here right now

That's l'Esprit Libre

Luxury is the Art of Living

# 聚焦亚太地区布局

中国大陆：10家度假村  
东南亚：10家度假村



# APAC Resorts Portfolio

Mainland China: 10  
ESAP: 10



An aerial photograph of a wide, winding river or lake system. The water is a deep blue, reflecting the sky and the surrounding greenery. The banks are covered in dense, vibrant green vegetation, likely mangroves or tropical forest. In the distance, the river winds through more green islands and eventually meets the ocean under a bright blue sky with scattered white clouds. A small boat is visible in the center of the river, leaving a long, white wake that stretches from the foreground towards the horizon.

**3 地中海邻境·黑龙滩度假村**  
**Club Med Joyview Heilongtan Resort**

# 度假村位置



成都市区（太古里）65公里，90分钟车程

成都双流机场75公里，90分钟车程

成都天府机场70公里，60分钟车程

成都东高铁站75公里，75分钟车程

眉山高铁站（东站）27公里，40分钟车程

地中海俱乐部旗下地中海邻境·黑龙滩度假村坐落于成都平原西南素有「川西第一湖 | 美名的黑龙滩西岸——中铁黑龙滩国际旅游度假区内，是地中海·邻境首家进驻西南地区的度假村，度假村依山而上，怀抱茶花谷，度假区内其他项目如群星环绕四周，与龙泉山脉隔水相望。

# Resort Location



Chengdu Downtown (Taikoo Li) 65km, 90min by car  
Chengdu Shuangliu Airport 75 kilometers, 90 minutes by car  
Chengdu Tianfu Airport 70 kilometers, 60 minutes by car  
Chengdu East Railway Station 75 km, 75 minutes by car  
Meishan Railway Station (East) 27 km, 40 min by car

Club Med Joyview Heilongtan Resort is located in the southwest of Chengdu Plain, known as "the first lake in western Sichuan" on the west bank of Heilongtan, in the China Railway Heilongtan International Tourism Resort. It is the first Mediterranean-neighborhood resort to enter the southwest region. The resort is located on the mountain, embracing the Camellia Valley, and other projects in the resort are like stars surrounding the surrounding area, and the Longquan Mountain Range across the water.





您的位置  
You Are Here

A 会议中心  
Convention Center

B 雨濛楼  
Yu Meng

C 大堂  
Lobby

D 暮云楼  
Mu Yun

E 竹柏楼  
Zhu Bai

1 人行入口  
Pedestrian Entrance

13 户外骑行  
Biking

25 桃香梦影  
Peach Valley

2 车行入口  
Car Entrance

14 户外泳池  
Pool

26 荷塘景观  
Lotus Pond

3 停车场电梯  
Parking Lot Elevator

15 家庭戏水池  
Family Pool

27 湿地景观  
Wetland Scenery

4 盎然餐厅  
Blossom

16 香草园  
Spice Garden

28 云影花谷  
Flower Valley

5 花烛餐厅  
Anthurium

17 电瓶车站点  
Buggy Station

29 丛林小径  
Village Walk

6 儿童玩乐区  
Kids Area

18 童稚天地  
Kids Playground

30 多功能草坪  
Utility Lawn

7 宜吧  
Joy Bar

19 星空露营  
Glamping

31 婚礼草坪  
Wedding Lawn

8 游戏中心  
Game Center

20 户外射箭场  
Archery

9 水乐园  
Waterland

21 林下采摘  
Orchard

10 迷宫花园  
Maze Garden

22 科普讲堂  
Science Discovery

11 水疗中心  
Spa

23 荷香渔趣  
Fishing Pond

12 露天影院  
Outdoor Theater

24 林盘景观  
Bamboo Alley



# 自在湖畔 近享「法适」假期 很法式 也很巴适

都市生活周而复始，忙忙碌碌，你是否时常想要一个说走就走的旅行？每到周末，你是否想置身山水，寻一处心灵栖息地，忘却时间与烦恼？

源自法国，70年的度假领导品牌“地中海俱乐部”即将登陆成都市场。来这里，舌尖到心间的巴适得板，解锁新潮玩法。

- 沉浸法式的松弛感和浪漫；惬意享受法式浪漫下午茶；亲手调制一杯图卢兹尾酒或者制作经典法式甜品；跟随专业G.O，品尝葡萄酒佳酿并学习纯正法式礼仪。
- 享受户外湖畔，体验皮划艇、舞动桨板；参与到亲水嘉年华派对中，酣畅淋漓。
- 深度体验当地巴适文化活动，探索黑龙滩水质奥秘，绘制川剧脸谱，做熊瑜伽。夜幕降临时，沉醉于古蜀秘境主题秀，感受本土文化的独特韵味。

您的「法适」湖畔假期，就在此刻正式开启！



# A Lakeshore Retreat Where French Charm Meets Chengdu Delight

In the repetitive hustle and bustle of urban life, do you often long for a spontaneous getaway? Every weekend, do you dream of immersing yourself in nature, finding a sanctuary for your soul, and forgetting about time and worries?

Originating from France, the leading vacation brand with 70 years of history, "Club Med," is coming to the Chengdu market. Come here to enjoy the ultimate comfort from your taste buds to your heart and discover trendy new experiences.

- Immerse yourself in the relaxed and romantic atmosphere of France; enjoy a leisurely French romantic afternoon tea; mix your own Toulouse-style cocktail or make a classic French dessert; follow a professional G.O to taste fine wines and learn authentic French dining etiquette.
- Enjoy the outdoors by the lakeside, experience kayaking and paddle boarding; join the exhilarating water carnival party.
- Immerse yourself in the delightful local cultural activities, delve into the mysteries of the Heilongtan water quality, paint Sichuan opera masks, and practice panda story yoga. As night falls, lose yourself in the ancient Shu secret realm theme show, experiencing the unique charm of the local culture.

Your "French" lakeside vacation is now officially open.

# 自在湖畔 近享「法适」假期 很法式 也很巴适

## 优雅风情 松弛闲适

一周每天都有不同的丰富体验：在美景中享受下午茶；亲手调制一杯图卢兹风情鸡尾酒或者制作经典甜品；跟随专业G.O，品尝葡萄酒佳酿并学习餐桌礼仪。

## 自在湖畔 活力嬉水

在户外湖水体验皮划艇、舞动桨板；在无边泳池开启一场水上篮球比赛；参与到亲水嘉年华派对中，酣畅淋漓。

## 巴适文化 本土特色

体验根据本地自然与文化特色独特打造的丰富活动，探索黑龙滩水质奥秘，亲手制作薰衣草香包或香皂，绘制川剧脸谱，做熊猫故事瑜伽。夜幕降临时，沉醉于古蜀秘境主题秀，感受本土文化的独特韵味。

## 原汁原味地中海俱乐部：

儿童俱乐部与亲子嬉水乐园 / 非凡家庭 / 快乐管家G.O/ 晚间娱乐与演出

# A Lakeshore Retreat Where French Charm Meets Chengdu Delight

## Elegant style and relaxation

Experience a different authentic each day of the week: enjoy afternoon tea amidst beautiful scenery; personally mix a Toulouse-style cocktail or create classic desserts; follow a professional G.O. to taste exquisite wines and learn authentic table etiquette

## Splash around the lake at your own pace

Experience kayaking and paddleboarding on the outdoor lake waters; start a water basketball game in the infinity pool; join a lively water carnival party, enjoying every moment to the fullest.

## Local Culture Character

Experience a variety of activities uniquely crafted based on local natural and cultural features, explore the mysteries of the water quality at Heilongtan, create lavender sachets or soap by hand, paint Sichuan opera facial masks, and participate in panda story yoga. As night falls, immerse yourself in the Ancient Shu-themed show, and feel the unique charm of local culture.

**The original Club Med:**

**Kids' Club & Family Pool/ Amazing Family!/ G.O. / Night Show**



**舒适的入住空间**

---



# Cozy Guest Rooms

---







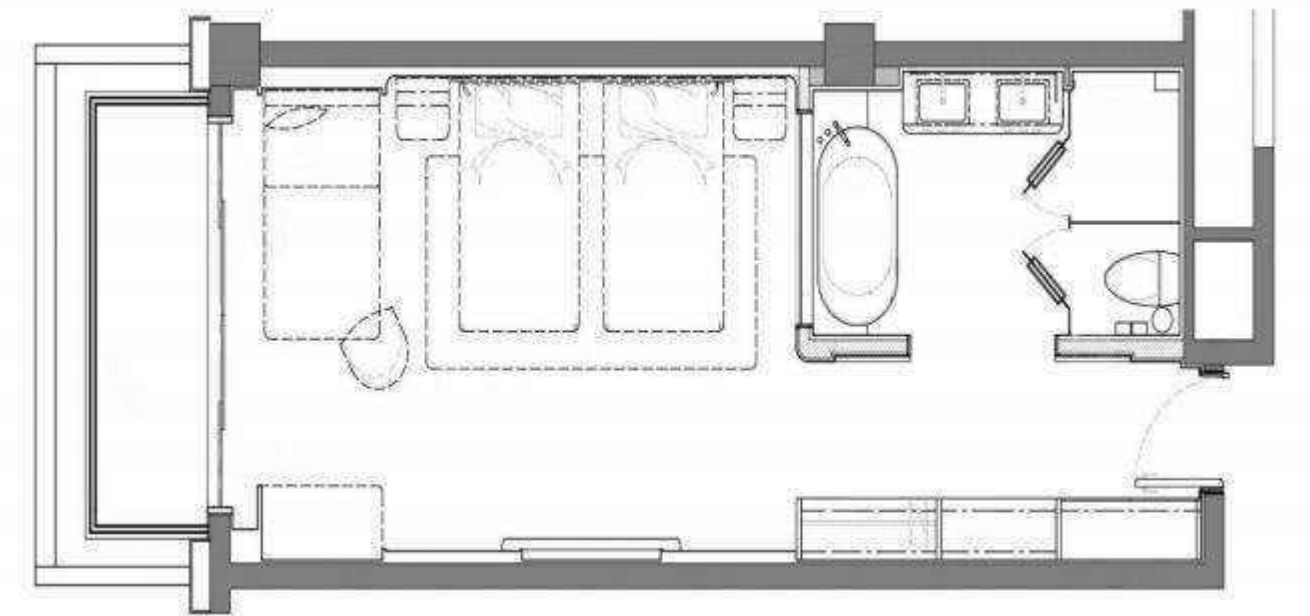
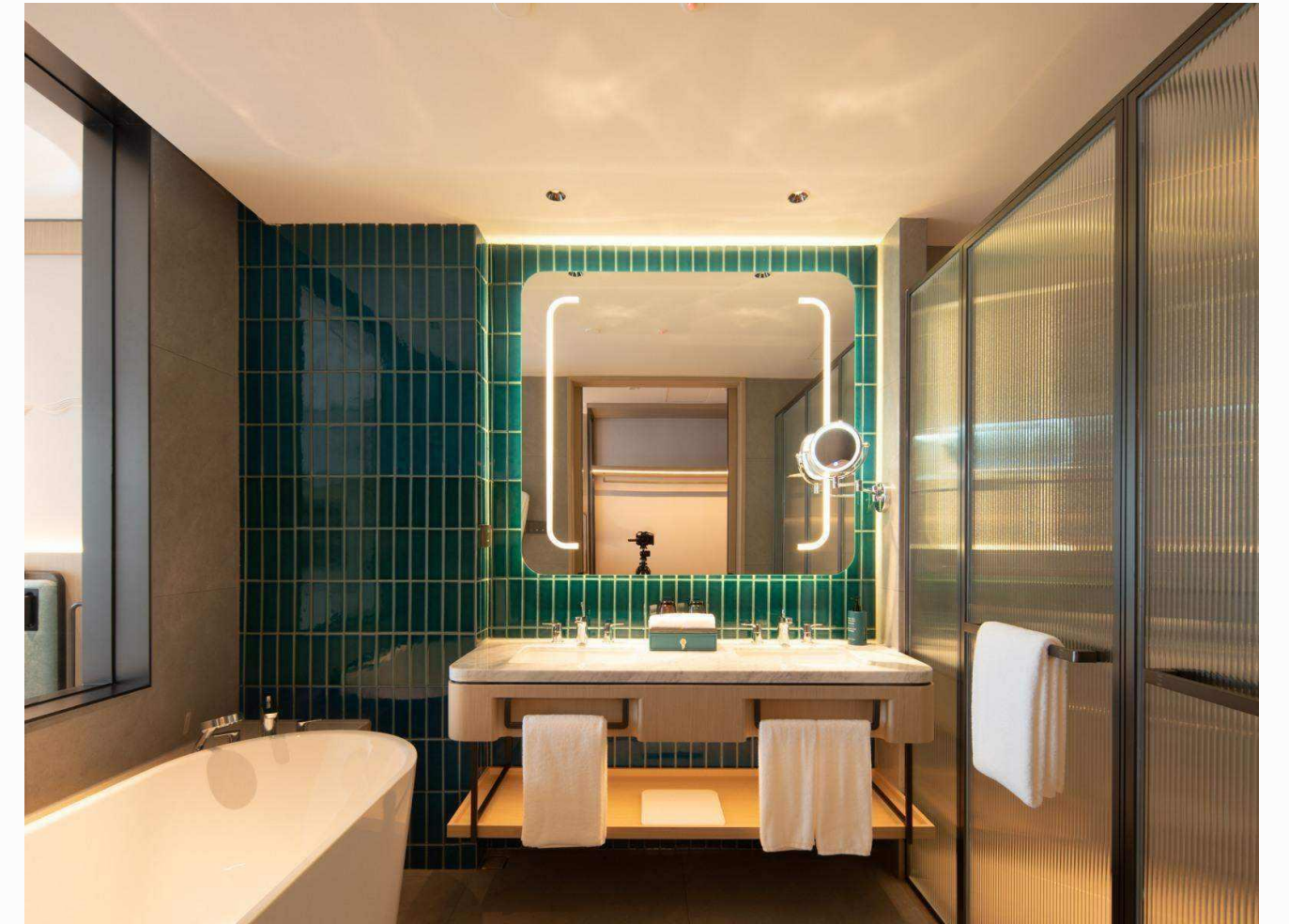
## 豪华客房

- 豪华大床房/双床房 配备阳台
- 豪华景观大床房/双床房 配备阳台

度假村客房设计灵感取自川西自然山水景观，宽敞明亮的风格，均设有阳台区域。房间内区域干湿分离，卫浴间配备浴缸及舒适洁具，为尊贵的宾客营造自在放松的私属空间

豪华客房面积：40 m<sup>2</sup>

床的尺寸供2名成人和1名儿童同时使用

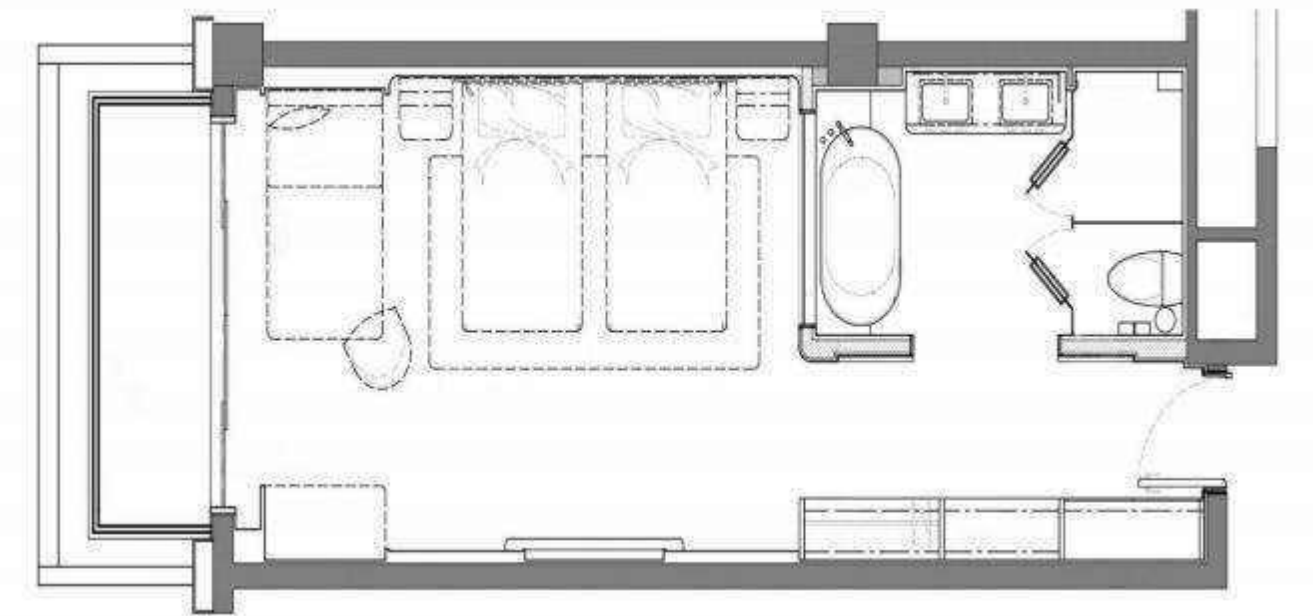
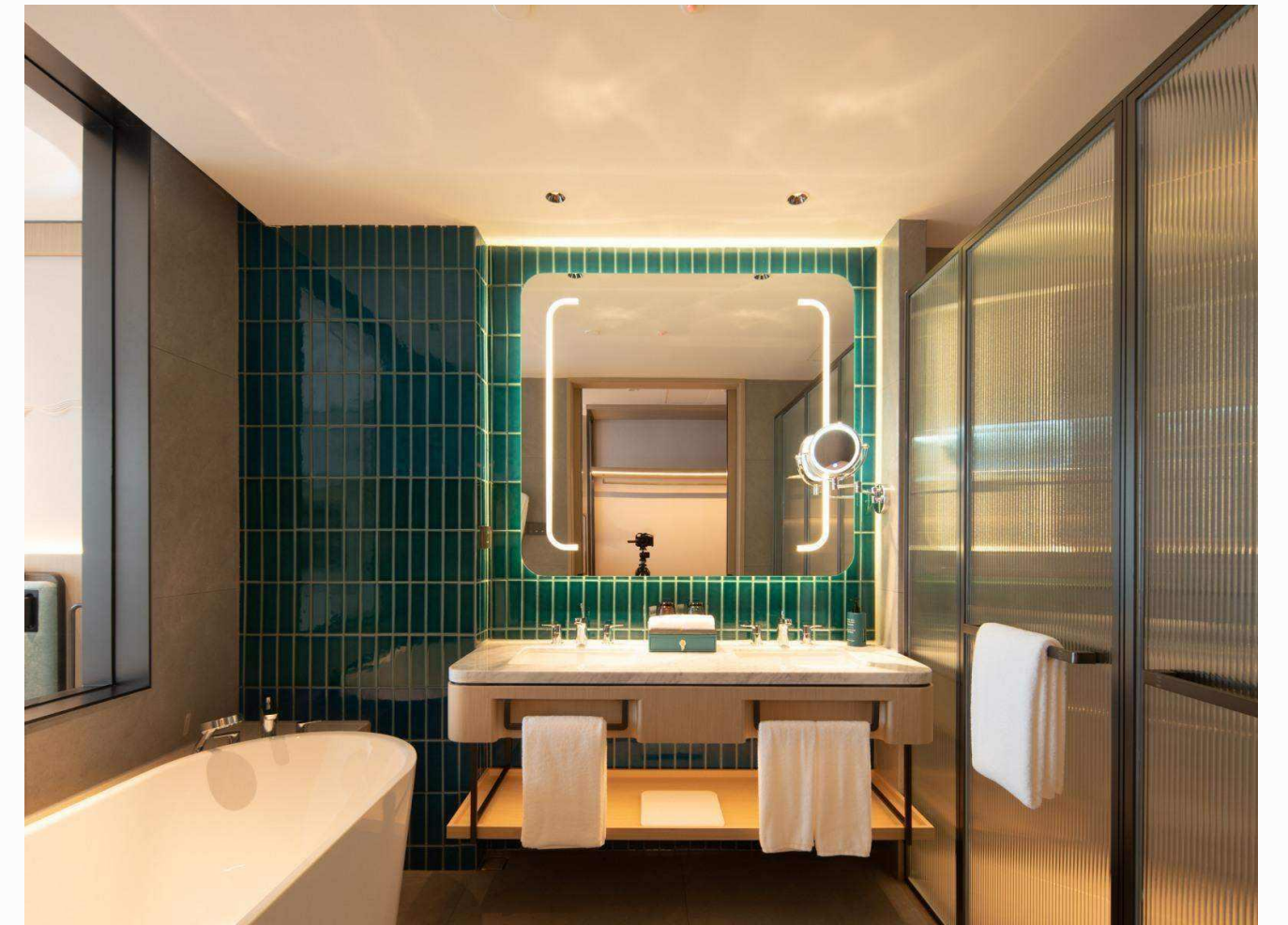


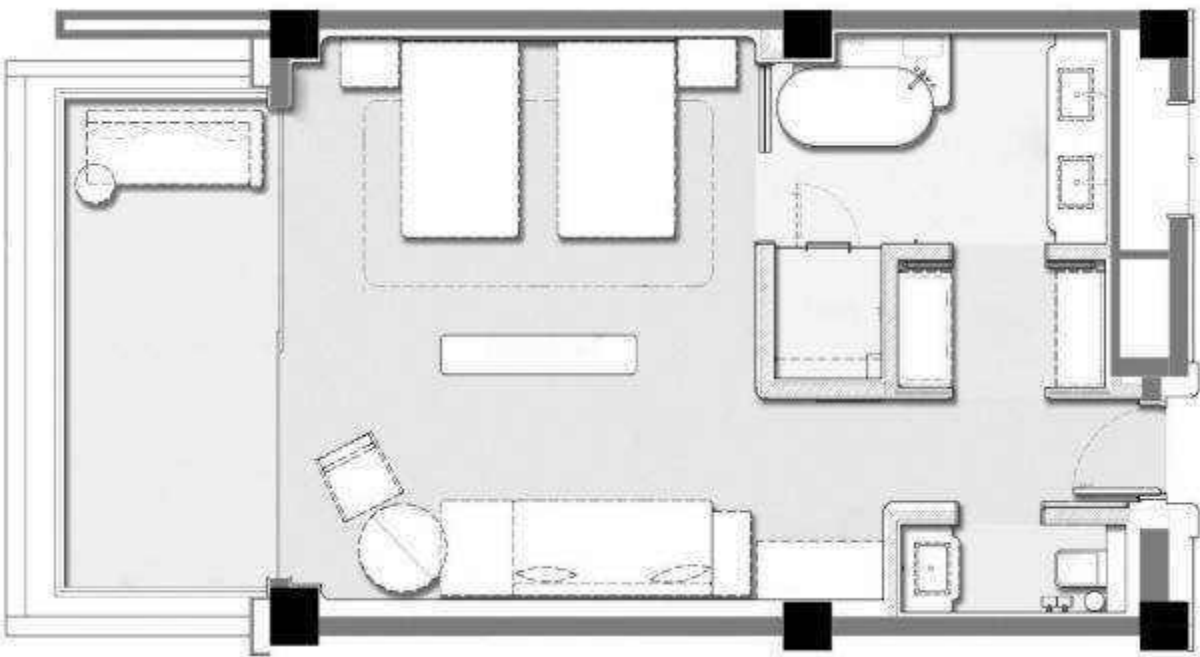
## Deluxe Room

- Deluxe Room - King Bed / Twin Beds
- Deluxe Room with View - King Bed / Twin Beds

Inspired by the natural landscape of western Sichuan, the rooms are spacious and bright in style, all with balcony areas. Dry and wet areas in the room are separated, and the bathroom is equipped with a bathtub and cozy sanitary ware, creating a private space for distinguished guests to relax.

Deluxe room size: 40 square meters  
Bed size for 2 adults and 1 child at the same time





## 尊享客房

- 尊享景观大床房/双床房 配备阳台

度假村客房设计灵感取自川西自然山水景观，宽敞明亮的风格，均设有阳台区域。房间内区域干湿分离，卫浴间配备浴缸及自动洁具，为尊贵的宾客营造自在放松的私属空间。尊享客房中增设有步入式衣帽间及相对独立的雅致起居区域，适合高品质入住需求的商旅或家庭。

客房面积：50 m<sup>2</sup>  
床的尺寸供2名成人和1名儿童同时使用

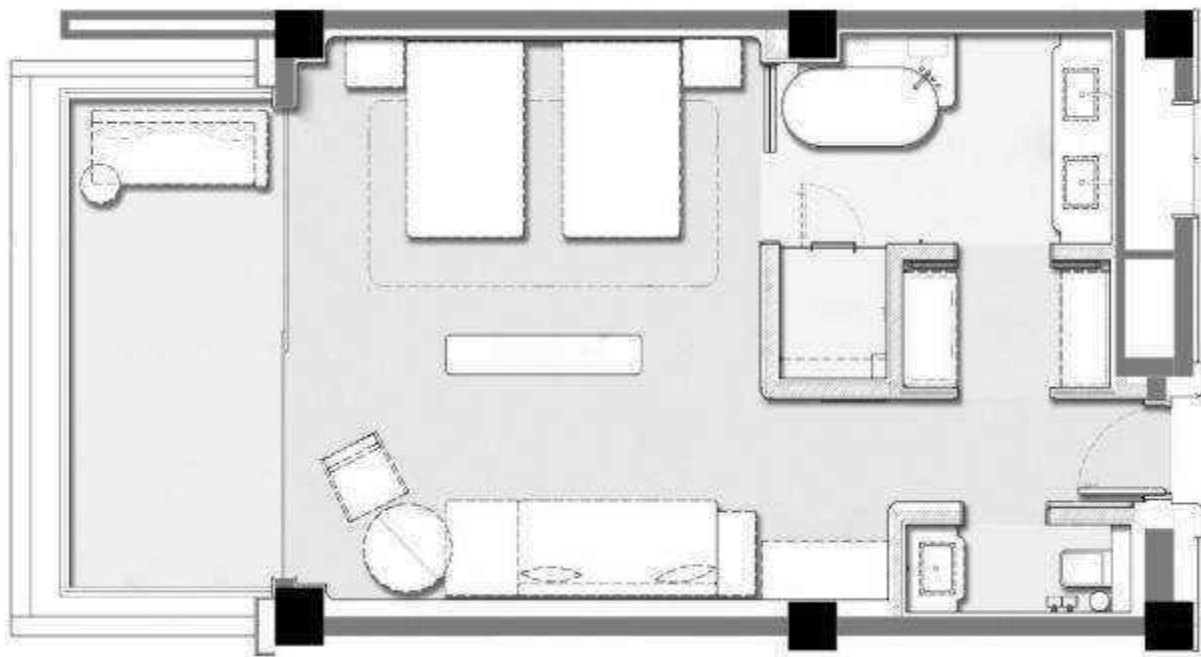


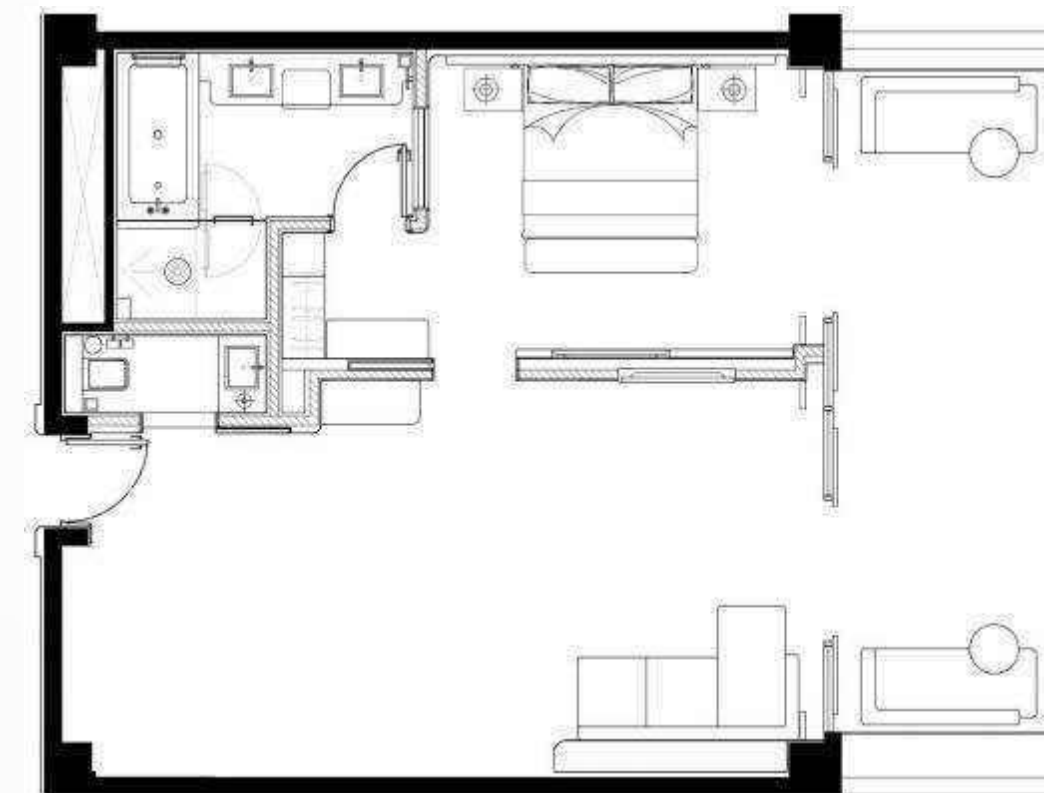
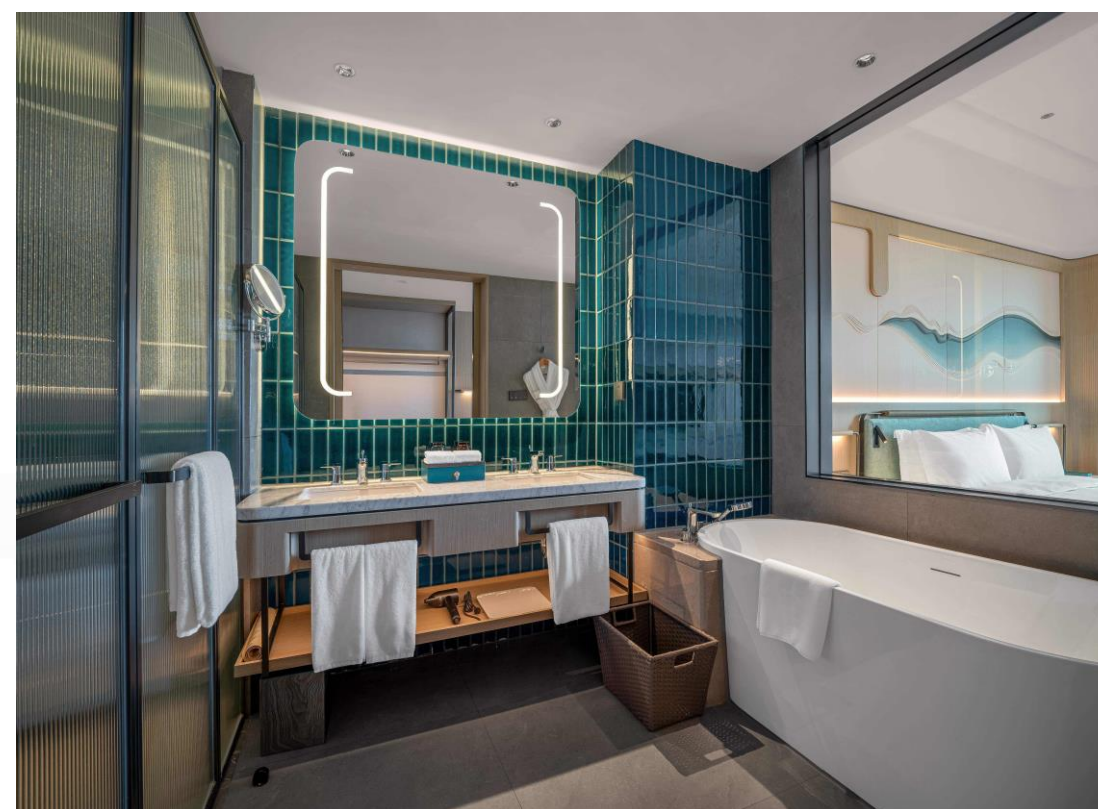
## Premium Room

- Premium Room with View- King Bed / Twin Beds

Inspired by the natural landscape of western Sichuan, the rooms are spacious and bright in style, all with balcony areas. Dry and wet areas in the room are separated, and the bathroom is equipped with a bathtub and automatic sanitary ware, creating a private space for distinguished guests to relax. Equipped with a walk-in closet and a relatively separate elegant living area, this room is ideal for business travelers or families who need a quality stay.

Room size: 50 square meters  
Bed size for 2 adults and 1 child at the same time





## 景观套房

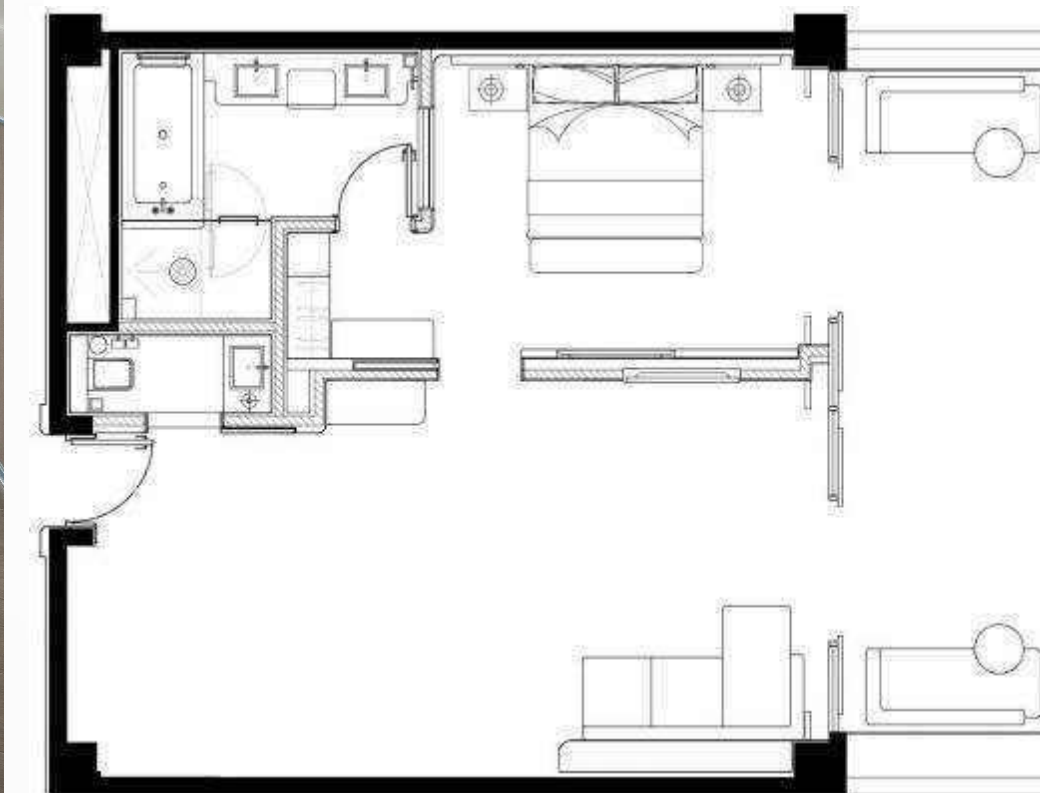
- 景观套房 配备阳台

度假村客房设计灵感取自川西自然山水景观，宽敞明亮的风格，均设有阳台区域。房间内区域干湿分离，卫浴间配备浴缸及自动洁具，为尊贵的宾客营造自在放松的私属空间。

景观套房设置独立起居空间，宽敞舒适的卧室区域更具私属感。

客房面积：70m<sup>2</sup>

床的尺寸供2名成人和1名儿童同时使用



## Suite with View

- Suite with Magnificat View and Balcony

The resort rooms are inspired by the natural landscapes of western Sichuan, featuring spacious and bright designs with balcony areas. Each room has separate wet and dry areas, bathrooms equipped with bathtubs and automatic fixtures, creating a private space for relaxation and comfort for esteemed guests. The landscape suites offer separate living spaces and spacious, cozy bedrooms with a more intimate atmosphere.

Room size: 70 square meters

Bed size for 2 adults and 1 child at the same time

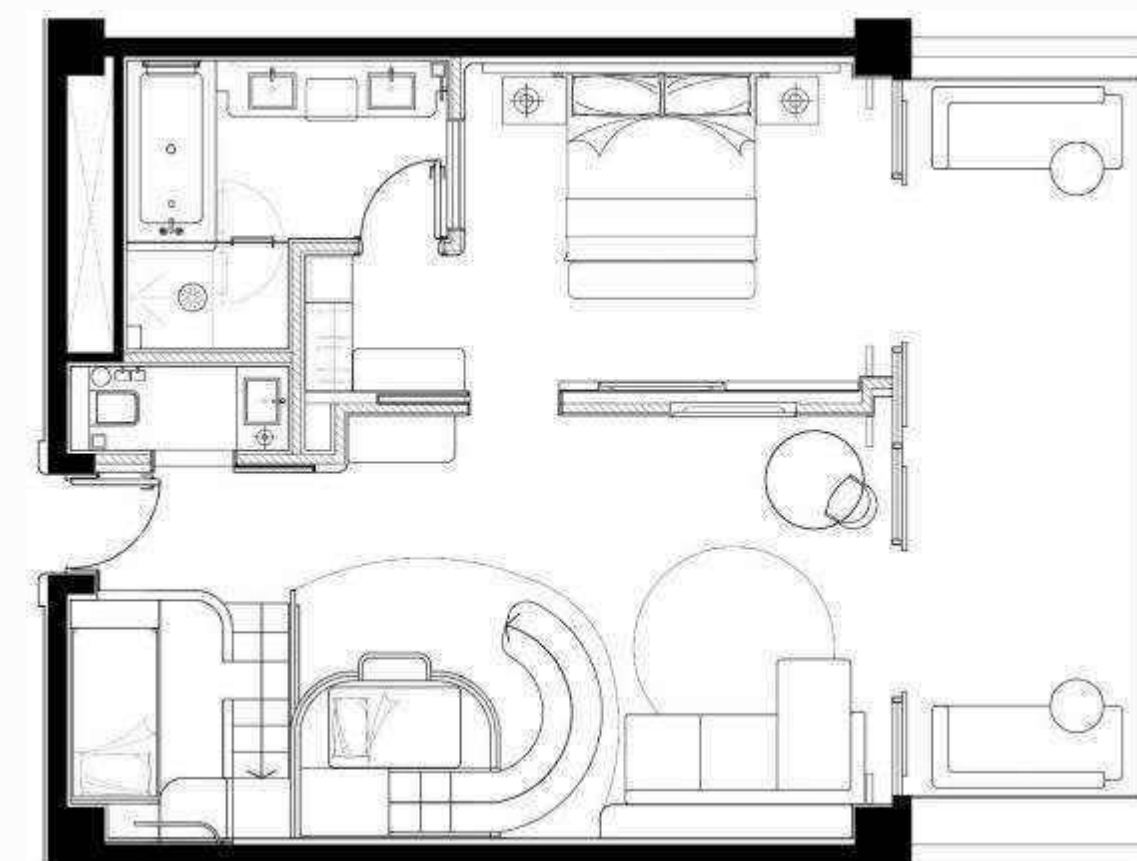
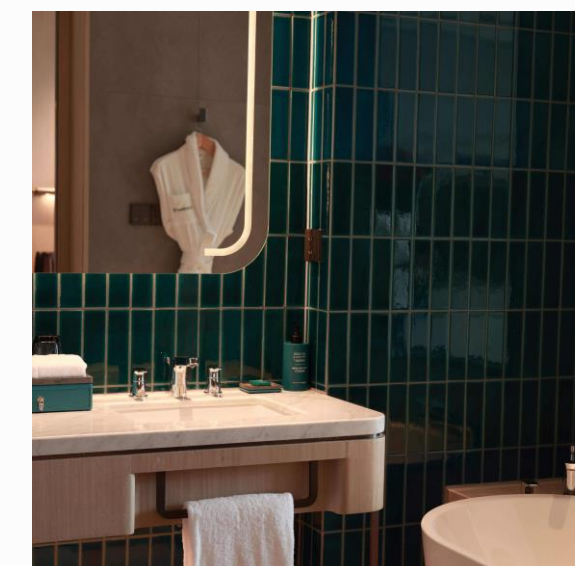
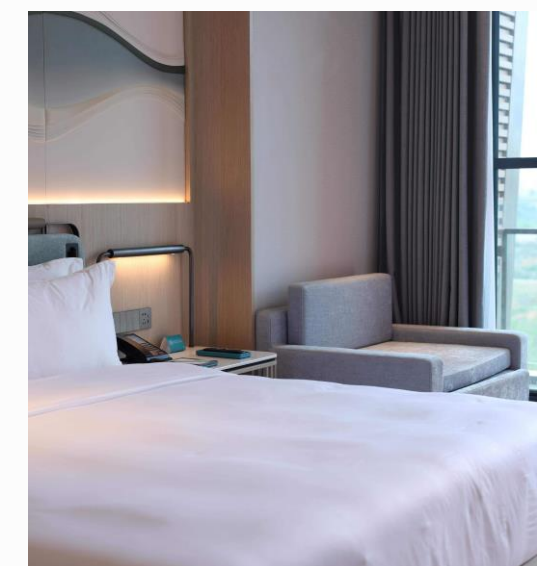
## 家庭套房

度假村客房设计灵感取自川西自然山水景观，宽敞明亮的风格，均设有阳台区域。房间内区域干湿分离，卫浴间配备浴缸及自动洁具，为尊贵的宾客营造自在放松的私密空间。

家庭套房内设有独具特色的亲子起居空间，将大自然请进房间，在森林和云朵的拥抱中，安然入眠。

客房面积：70m<sup>2</sup>

床的尺寸供2名成人和2名儿童同时使用



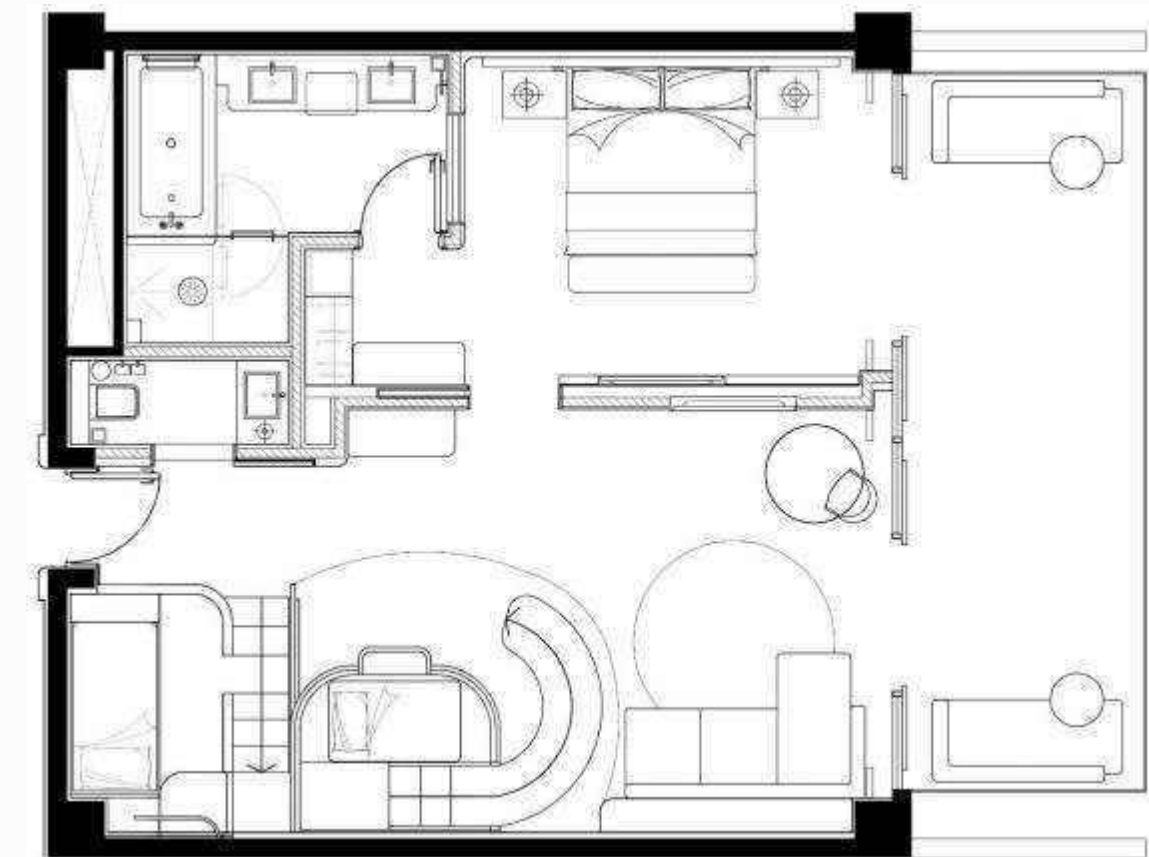
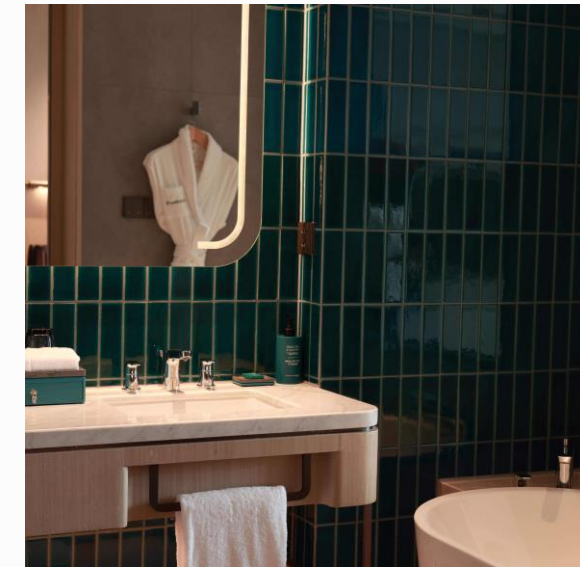
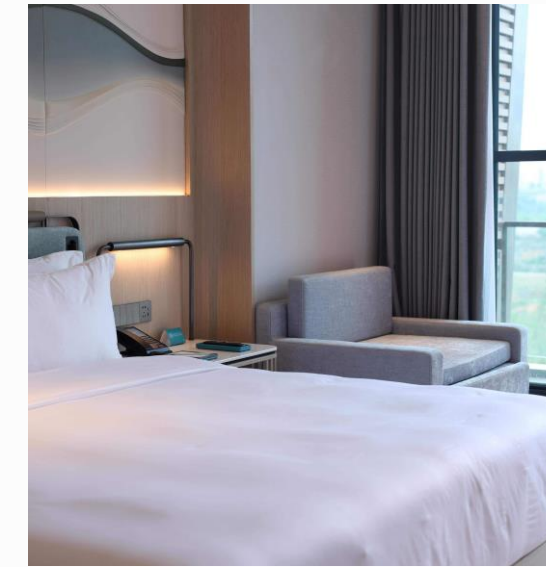


## Family Suite

The design inspiration for the rooms is drawn from the natural landscapes of western Sichuan, boasting spacious and bright styles, each featuring a balcony area. The rooms are divided into wet and dry areas, with bathrooms equipped with bathtubs and automatic fixtures, creating a private space for esteemed guests to relax and unwind. The landscape suites feature separate living areas, with the bedroom area being more personalized, spacious, and comfortable.

Room size: 70 square meters

Bed size for 2 adults and 2 child at the same time.





## 庭院房

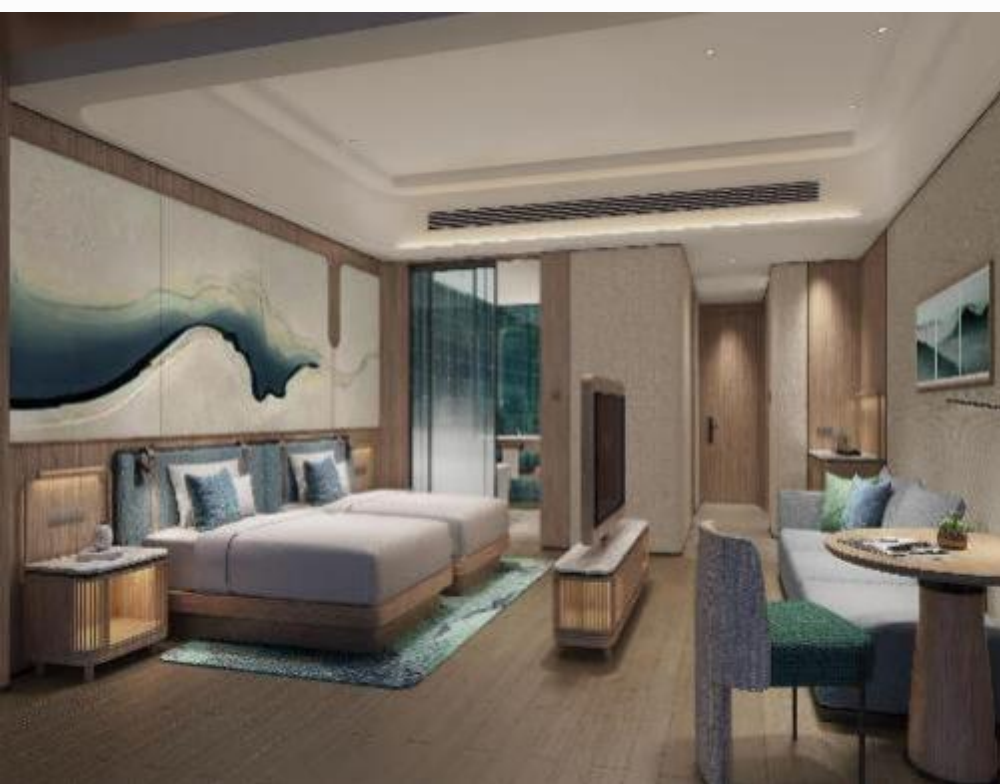
- 豪华庭院房
- 尊享庭院房
- 家庭庭院房

度假村客房设计灵感取自川西自然山水景观，宽敞明亮的风格，均设有阳台区域。房间内区域干湿分离，卫浴间配备浴缸及舒适洁具，为尊贵的宾客营造自在放松的私属空间。

庭院房分别位于雨濛楼和暮云楼1层，依从房型大小，布局充分体现对家庭成员活动空间的用心。

此房型基础上提供宠物友好住宿体验，真正感受全家出行的惬意时光。

客房面积：40m<sup>2</sup> - 70m<sup>2</sup>  
床的尺寸供2名成人和1名或2名儿童同时使用





## Garden Room

- Deluxe Room with Garden
- Premium Room with Garden
- Family Suite with Garden

The resort guest rooms are designed with inspiration from the natural landscapes of western Sichuan, featuring spacious and bright styles, each with a balcony area. The rooms have separate wet and dry areas, with bathrooms equipped with bathtubs and comfortable fixtures, creating a private space for esteemed guests to relax and unwind.

The Garden Rooms are located on the first floor of the Yu Meng Building and the Mu Yun Building.

This room type also offers a pet-friendly accommodation experience, allowing families to truly enjoy their leisure time together.

Room size: 40-70 square meters  
Bed size for 2 adults and 1 or 2 child at the same time.





# 丰富多样的餐饮选择



国际餐厅-盎然



特色餐厅-花烛



大堂吧



主酒吧-宜吧



# A Diverse Selection of Dining Options



Blossom  
International  
Restaurant



Anthurium



Lobby Bar



Joy bar



# 国际餐厅 - 盎然

## International Restaurant Blossom

餐厅位于度假村雨濛楼B1层，面积1587平方米，室外96坐席，室内398坐席，共有494个座席。

盎然国际餐厅为您提供早、午、晚三餐的多国美食及本地特色餐饮体验，并设有儿童专享区域。同时全天候提供酒吧服务。多样化的选择，让您尽享美食之旅。

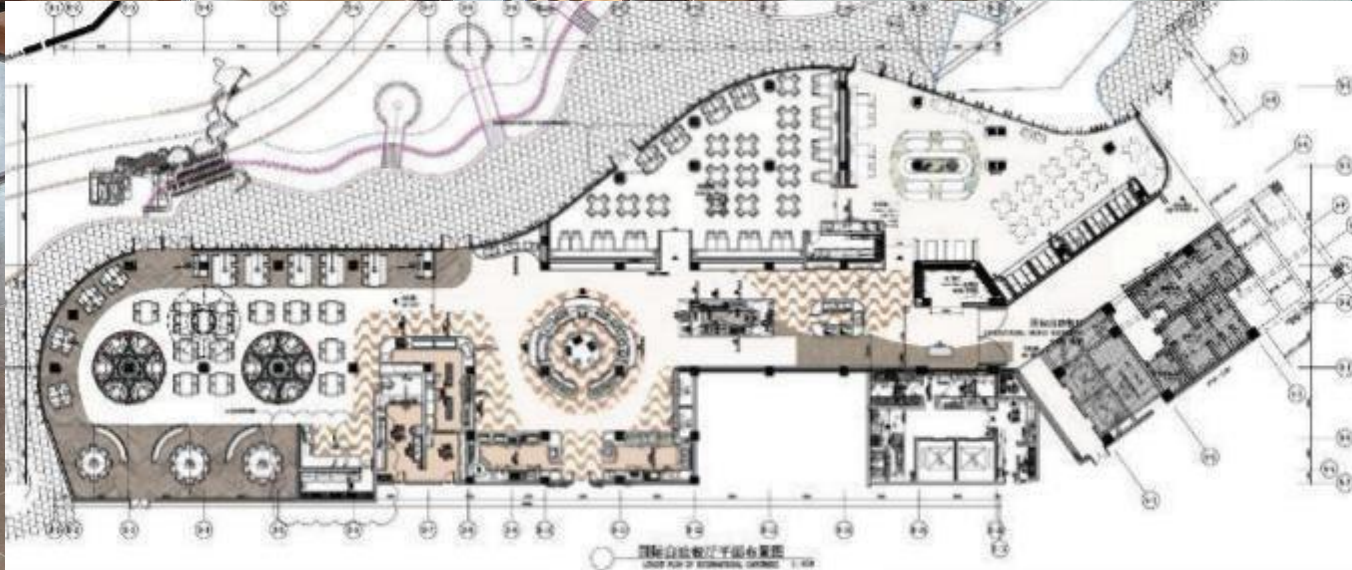
### 餐厅特色：

让客人可以一站式享受多元化的多国美食，如：

- 冷菜档口：轻食沙拉、纤维果蔬汁
- 国际档口：川味把把烧、日式铁板烧
- 面包档口：渔夫面包、川腊面包
- 意大利档口：手工意式方饺、现打帕尔马披萨
- 午后餐点/晚间餐点：手工小笼包、鸡汤龙抄手、手打鱼丸面
- 肉车&扒档：安格斯谷饲牛排、巴西烤肉、广式烧腊
- 甜品档口：法式歌剧蛋糕（传统、椒麻、辣椒等）

### 营业餐段及时间：

- 早餐：07:00-10:00
- 午餐：12:00-14:00
- 晚餐：18:00-21:00
- 午后餐点/晚间餐点：14:00-17:00/21:00-23:00





# International Restaurant Blossom

The Blossom International Restaurant is located on the B1 floor of Yumeng Building of the resort, 1587 square meters, 96 outdoor seats and 398 indoor seats, with a total of 494 seats.

The International Restaurant provides you with breakfast, lunch and dinner of multinational cuisine and local dining experience, and has a special area for children, 24/7 noodle bar dining service. A variety of options to enjoy your culinary journey.

## Restaurant Features:

Allowing guests to enjoy a diverse range of multinational cuisines at one stop, such as:

- Cold dish stall: light salad, fiber fruit and vegetable juice
- International stalls: Szechuan-style barbecue, Japanese-style teppanyaki
- Bread: Fisherman's Bread, Szechuan Bread
- Italian: handmade Italian dumplings, freshly made Parma pizza
- Latelunch/dinner : Various types of noodle dishes, A La Carte meum
- Meat cart & steak stall: Angus grain-fed steak, Brazilian barbecue, Cantonese barbecued pork
- Dessert Stall: French Opera Cake (traditional, pepper, chili, etc.)

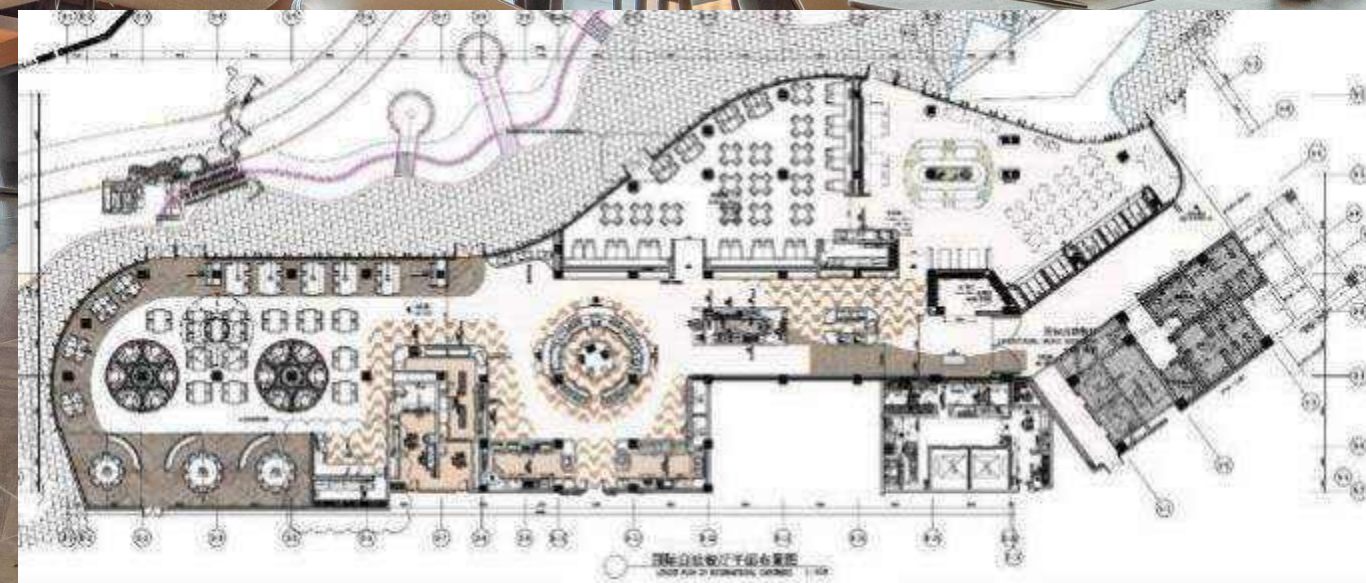
## Business meal periods and hours:

Breakfast

Monday - Thursday: 07:00-10:00

Friday - Sunday: 07:00-10:30

- Lunch 12:00-14:00
- Dinner 18:00-21:00
- Latelunch/dinner: 14:00-17:00/21:00-23:00



# 特色餐厅 - 花烛

## Specialty Restaurant Anthurium

餐厅位于雨濛楼B2层，面积284平方米，室外26坐席，室内106坐席，共有132个座席。

主打秘制手工鱼丸火锅，鱼丸选用新鲜黑龙滩生态鱼腩经过手工摔打、搅拌、捶打等工艺，制作而成。其口感滑嫩，营养丰富，独具地方特色。同时餐厅配备精致零点区域及私密包间，可提供私人定制化服务。为一价全包住店客人及店外散客提供更丰富的用餐选择和体验。

### 餐厅特色

以黑龙滩本地生态鱼为原材料，开发纯手工而制的创新菜品，同时根据不同季节推出各式锅底及应季菜品，如：

#### • 手打鱼丸

原味生态手打鱼丸、黑松露和牛手打鱼丸、咖喱虾滑手打鱼丸、火腿熊猫笋手打鱼丸

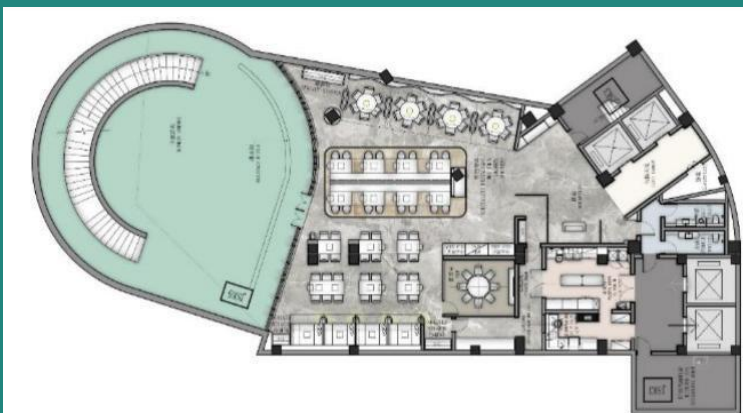
#### • 特色锅底

老坛酸菜锅底、黑龙滩鱼骨浓汤锅底、川味红油锅底、泰式冬阴功锅底

### 营业餐段及时间：

午餐 12:00 - 14:00

晚餐 18:00 - 21:00





## Specialty Restaurant Anthurium

The Anthurium is located on the B2 floor of Yumeng Building, with an area of 284 square meters, with 26 seats outdoors and 106 seats indoors, with a total of 132 seats.

The main handmade fish ball hot pot, fish ball selection of fresh Heilongtan ecological fish brisket, after manual wrestling, stirring, hammering and other processes, made of. It has smooth and tender taste, rich nutrition and unique local characteristics. At the same time, the restaurant is equipped with exquisite a la carte area and private rooms, which can provide private customized services. Provide more dining options and experiences for one-price all-inclusive hotel guests and individual customers.

### Restaurant characteristics

Using the local ecological fish of Heilongtan as raw materials, we develop innovative dishes made purely by hand, and launch a variety of pan bottoms and seasonal dishes according to different seasons, such as:

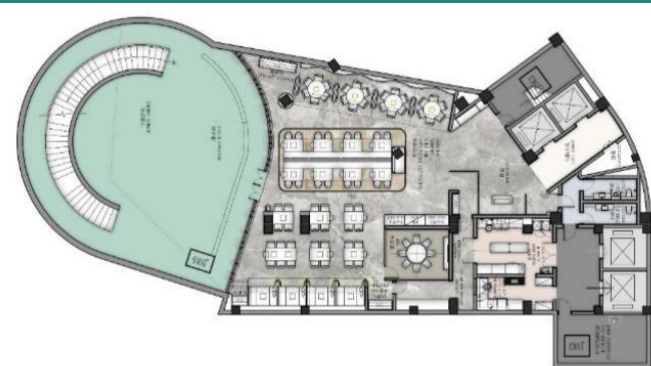
Original ecological fish balls, black truffle and beef fish balls, curry shrimp slipper fish balls, ham and panda bamboo shoot fish balls.

### Special pot bottom

Laotan sauerkraut pot bottom, Heilongtan fish bone thick soup pot bottom, Sichuan flavor red oil pot bottom, Thai style Tom yam Gong pot bottom.

### Business meal periods and hours:

- Lunch 12:00-14:00
- Dinner 18:00-21:00



# 主酒吧 - 宜吧

## Joy Bar

位于度假村大堂楼B1层的主酒吧，室外38坐席，室内104坐席，共有142位坐席，面积558平方米，是村内独具特色的娱乐场所。

宜吧提供各式鸡尾酒、啤酒、洋酒、葡萄酒及专业的咖啡茶饮、果汁等饮品，搭配每日现场制作的精致小食，为客人营造放松休闲的享受氛围。

G.O团队以本地文化为主轴，精心准备的互动表演和各类主题的狂欢派对，为在座宾客搭建的沉浸式舞台体验，更是流连忘返的娱乐享受。

### 餐厅亮点

一价畅饮各式鸡尾酒、啤酒、洋酒、葡萄酒等及现场制作的佐酒小食，搭配各式零点酒水。同时G.O的精彩演出和激情互动将为客人创造一个难忘的派对体验。

### 营业时间

10:00 - 23:00





## Joy Bar

The main bar located on the B1 floor of the resort lobby, with 38 outdoor seats and 104 indoor seats, a total of 142 seats, an area of 558 square meters, is a unique entertainment place in the village.

The Joy bar offers a variety of cocktails, beer, wine, professional coffee, tea, juice and other drinks, together with exquisite daily snacks, to create a relaxed atmosphere for guests to enjoy.

G.O team takes local culture as the main axis, carefully prepared interactive performances and carnival parties with various themes, and built an immersive stage experience for guests, which is a lingering entertainment enjoyment.

### Restaurant highlights

Free to drink all kinds of cocktails, beer, wine, wine and other on-site wine snacks, with all kinds of a la carte drinks. At the same time, the wonderful performances and passionate interactions of Happy Butler G.O will create an unforgettable party experience for guests.

### **Business meal periods and hours:**

10:00 - 23:00

# 大堂吧

## Lobby Bar

大堂吧位于度假村大堂楼1层的酒吧，50位坐席。一价全包客尊享指定饮品及甜品小食无限享用，其余产品可根据个人喜好额外选择。

大堂吧以应季食材制作而成的精美主题下午茶体验和传统地道的甜品为主，同时提供各式葡萄酒、香槟等酒类、鲜榨果汁、中式茶文化及专业的咖啡体验，将为客人的味蕾增添色彩。

### 餐厅亮点

- 传统专业的中式茶服务，并以应季试菜精制而成的季节性中西式下午茶。如：
- 请回答1314（来自海拔1314米的汶川赵公山车厘子主题下午茶）
- 优雅成都下午茶（老成都火锅主题茶歇）

### 营业时间

9:00-18:00



## Lobby Bar

Lobby Bar Located on the 1st floor of the resort lobby building, seating 50. One price all inclusive guests can enjoy the designated drinks and dessert snacks unlimited, other products can be selected according to personal preference.

The lobby bar features exquisite themed afternoon tea experience made from seasonal ingredients and traditional French desserts. At the same time, it offers a variety of wines, champagne and other liquors, fresh juice, Chinese tea culture and professional coffee experience, which will add exotic flavours to guest' s taste buds.

### Restaurant highlights:

Traditional and professional Chinese tea service, and seasonal Chinese and Western afternoon tea made from seasonalseasonal ingredient. Such as:

Please answer 1314 (Cherry themed French Afternoon Tea from Zhaogong Mountain, Wenchuan, 1314 meters above sea level)

Elegant Chengdu Afternoon Tea (Old Chengdu hot pot theme tea break)

**Business meal periods and hours:**  
9:00-18:00





自由无忧，成就非凡



无忧无虑，挚爱鉴证

# 会奖与婚礼



会议



宴会



培训及研讨



婚礼或个人宴会



Amazing MICE



Beloved Witness

# MICE & Weddings



convention



banquet



Training and Seminars



Weddings or private parties

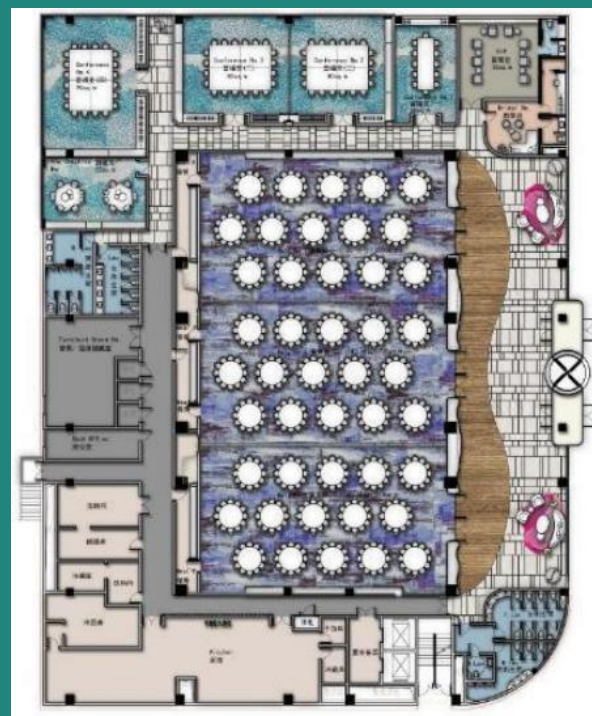
# 会议及团建

## Convention Center

地中海邻境·黑龙滩度假村隶属地中海俱乐部旗下，毗邻川西第一海黑龙滩，是成都都市圈南端独具特色的国际品牌会议度假酒店。

会议中心楼位于度假村北端独立区域，与近百亩度假村园区巧妙融合。

我们致力于为热爱探索，崇尚健康，向往自然的全球行业精英们量身打造无忧汇聚之所，助就非凡盛会。



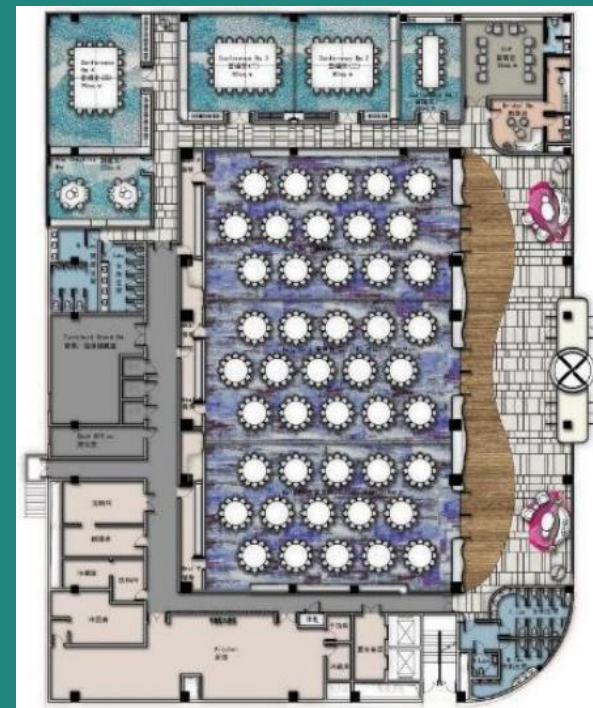


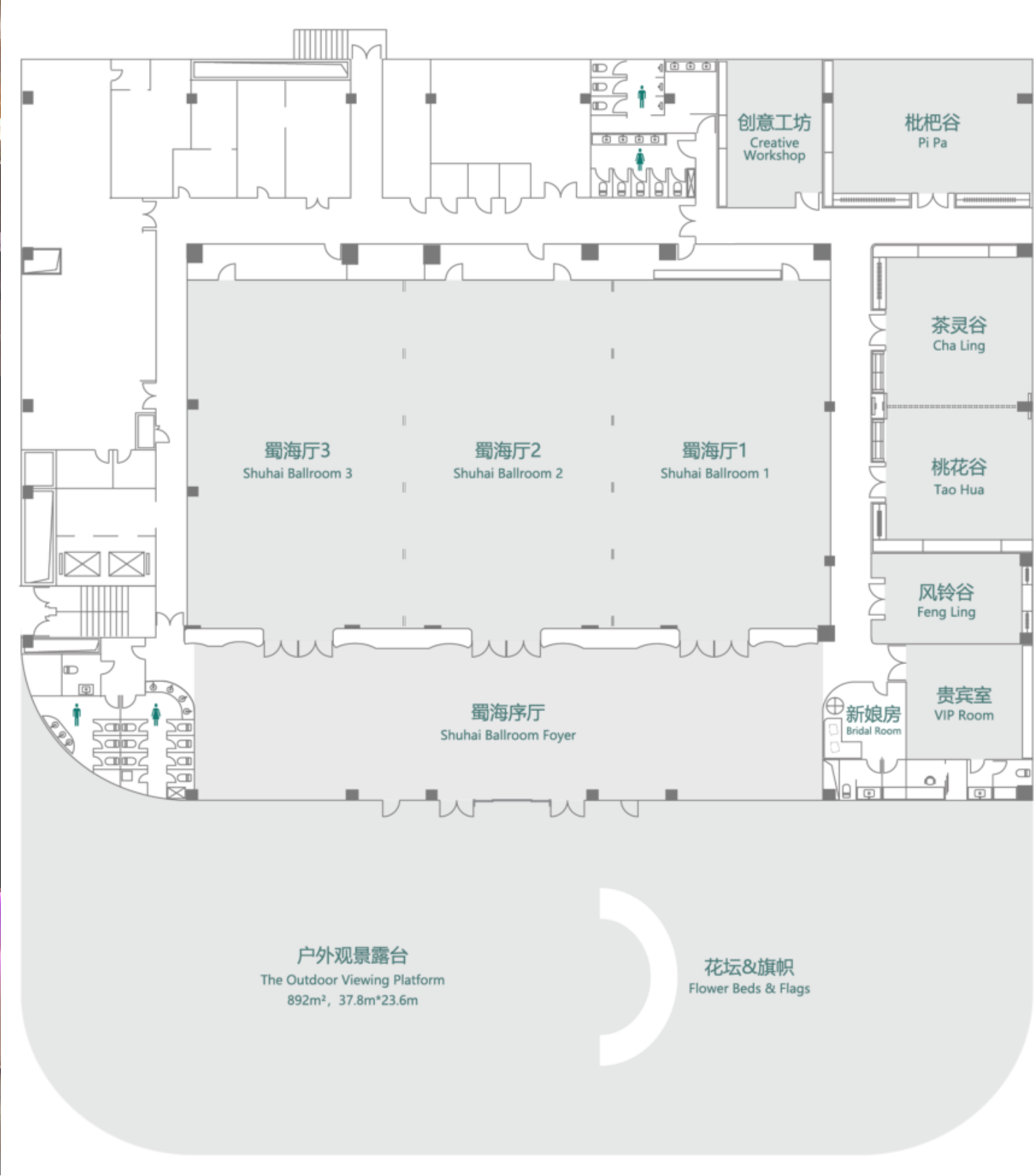
# Convention Center

Club Med Joyview Heilongtan Resort, affiliated with the Club Med, is adjacent to Heilongtan, the first sea in western Sichuan, and is a unique international brand conference resort hotel at the southern end of the Chengdu metropolitan area.

The conference center building is located in a separate area at the northern end of the resort, cleverly integrated with the resort's sprawling parkland.

We are committed to creating a convenient gathering space tailored for global industry elites who love exploration, advocate health, and yearn for nature, assisting in hosting extraordinary events.

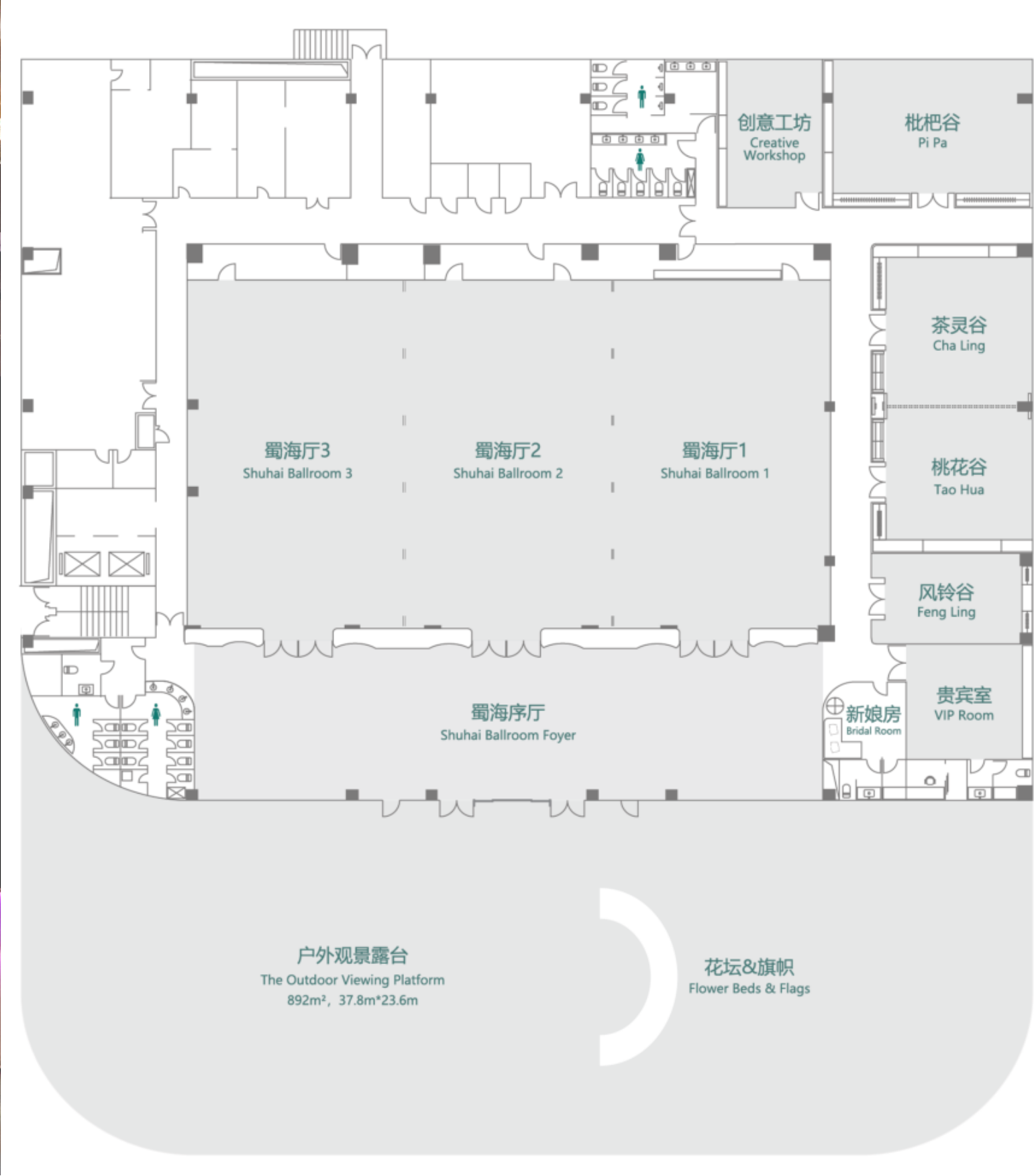




## 宴会及会议 多功能设施

- 蜀海厅 近 800m<sup>2</sup> 无柱大宴会厅，层高8.7米，大宴会厅可分隔成3部分单独使用。
- 另配备5间多功能厅，其中4间带自然采光，1间贵宾室及新娘化妆间。可满足不同人数和需求的小型会议、宴会选择。
- 标准会议音响及视屏设备
- 高速网络

- 独立抵达空间
- 324 m<sup>2</sup>的宴会厅序厅，可满足各类餐前酒会、会议茶歇等需求。
- 开阔的户外观景台可为婚礼仪式、团建活动、私人派对等不同需求户提供多样化选择空间
- 度假村内多处景观草坪及户外场地，灵活活动方案
- 山水之间，打造天府都市圈“法适”浪漫湖岛婚典圣地



## Banquet & Function Room Facilities

- The Shuhai Ballroom is a pillar-less ballroom of nearly 800 square meters, with a floor height of 8.7 meters. 7 meters, the Grand Ballroom can be separated into 3 parts for individual use.
- It is also equipped with 5 multi-function rooms, 4 of which have natural lighting, 1 VIP room and bridal dressing room. It can satisfy different numbers of people and needs of small meetings and banquets.
- Standard conference sound and video equipment
- high speed network

- Individual arrival space
- 324 square meters of banquet hall prelude, can meet the needs of all kinds of pre-dinner cocktail, meeting coffee breaks, etc.
- The wide outdoor observation deck provides a variety of choices for different needs, such as wedding ceremonies, group activities and private parties.
- Flexible program with many landscaped lawns and outdoor areas in the resort

# 宴会及会议

场地	面积	长*宽*高^	中式宴会	课桌式	剧院式	董事会	回字型	U型
蜀海厅	792m <sup>2</sup>	36m*22m*8.7m	450pax	550pax	1000pax	N/A	150pax	120pax
蜀海厅 1	264m <sup>2</sup>	12m*22m*8.7m	150pax	170pax	350pax	96pax	102pax	84pax
蜀海厅 2	264m <sup>2</sup>	12m*22m*8.7m	150pax	170pax	350pax	96pax	102pax	84pax
蜀海厅 3	264m <sup>2</sup>	12m*22m*8.7m	150pax	170pax	350pax	96pax	102pax	84pax
蜀海序厅	324	36m*9m*4.5m	N/A	N/A	N/A	N/A	N/A	N/A
风铃谷	49.5 m <sup>2</sup>	9m*5.5m*3.2m	N/A	N/A	N/A	20pax	N/A	N/A
桃花谷+茶灵谷	162m <sup>2</sup>	18m*9m*3.2m	100pax	100pax	150pax	72pax	78pax	66pax
桃花谷	81m <sup>2</sup>	9m*9m*3.2m	50pax	36pax	70pax	25pax	36pax	30pax
茶灵谷	81m <sup>2</sup>	9m*9m*3.2m	50pax	36pax	70pax	25pax	36pax	30pax
枇杷谷	108m <sup>2</sup>	12m*9m*3.2m	60pax	60pax	80pax	31pax	42pax	36pax
创意室	54m <sup>2</sup>	9m*6m*3.2m	N/A	12pax	N/A	N/A	N/A	N/A
贵宾室	49m <sup>2</sup>	7m*7m*3.2m	N/A	N/A	N/A	N/A	N/A	N/A

^指天花板高度

# Meeting & Events

Venue	Area	Dimension	Round Table	Classroom	Theatre	Boardroom	Hollow Square	U-Shaped
Shuhai Ballroom	792m <sup>2</sup>	36m*22m*8.7m	450pax	550pax	1000pax	N/A	150pax	120pax
Shuhai Ballroom 1	264m <sup>2</sup>	12m*22m*8.7m	150pax	170pax	350pax	96pax	102pax	84pax
Shuhai Ballroom2	264m <sup>2</sup>	12m*22m*8.7m	150pax	170pax	350pax	96pax	102pax	84pax
Shuhai Ballroom3	264m <sup>2</sup>	12m*22m*8.7m	150pax	170pax	350pax	96pax	102pax	84pax
Ballroom Foyer	324m <sup>2</sup>	36m*9m*4.5m	N/A	N/A	N/A	N/A	N/A	N/A
Feng Ling	49.5 m <sup>2</sup>	9m*5.5m*3.2m	N/A	N/A	N/A	20pax	N/A	N/A
Tao Hua +Cha Ling	162m <sup>2</sup>	18m*9m*3.2m	100pax	100pax	150pax	72pax	78pax	66pax
Tao Hua	81m <sup>2</sup>	9m*9m*3.2m	50pax	36pax	70pax	25pax	36pax	30pax
Cha Ling	81m <sup>2</sup>	9m*9m*3.2m	50pax	36pax	70pax	25pax	36pax	30pax
Pi Pa	108m <sup>2</sup>	12m*9m*3.2m	60pax	60pax	80pax	31pax	42pax	36pax
Creative Workshop	54m <sup>2</sup>	9m*6m*3.2m	N/A	12pax	N/A	N/A	N/A	N/A
VIP Room	49m <sup>2</sup>	7m*7m*3.2m	N/A	N/A	N/A	N/A	N/A	N/A



# 纵情山水，活力绽放



水疗及静池



迷你俱乐部



非凡家庭



活力运动



# 纵情山水，活力绽放



SPA & Zen Jacuzzi



mini bar



Amazing Family



Vitality Sports

# SPA 水疗

位于度假村竹柏楼B1层， 内设3间双人理疗室， 3间单人理疗室， 以优良的护理配方和精湛的技术， 同时配合多种天然植物精华， 在安宁静谧的环境中， 为客人提供健康平衡的养生体验。







# SPA

located on the B1 floor of the resort's Bamboo Tower, the 3 double treatment rooms and 3 single treatment rooms .

Feel rejuvenated with a luxurious massage in our SPA where you can enjoy SPA services including professional massage, facial treatment and foot massage.

\*At extra cost





# 儿童玩乐区 Kids Area

近千平米的室内儿童玩乐区位于雨濛楼B1层，家长可陪同孩子在其中的家庭空间及儿童游乐区尽情欢乐。

地中海独具特色的迷你俱乐部活动将在玩乐区的艺术手工制作空间、音乐空间、游戏工厂等区域展开。

专业的儿童空间及场景，国际化的管家托管及互动，打造奇妙的童趣时光，专业儿童设施及服务结合提炼出活动精华，通过体育、游戏和表演，开展一系列以正向教育为基础的新活动，专注于孩子的创造力、勇气、自信、合作、情感连结、快乐六大软实力培养。

营业时间 08:30-17:00

\*营业时间可能会根据现场情况进行调整，请以度假村当天的信息为准



创造力



勇气



自信



合作



情感连接



快乐





## Kids Area

Nearly 1,000 square meters of indoor children's play area is located on the B1 floor of Yumeng Building, where parents can accompany their children to enjoy the family space and children's play area.

The unique Mini Club activities of Club Med will be held in the art and craft creation space, music space, game factory and other areas of the play area.

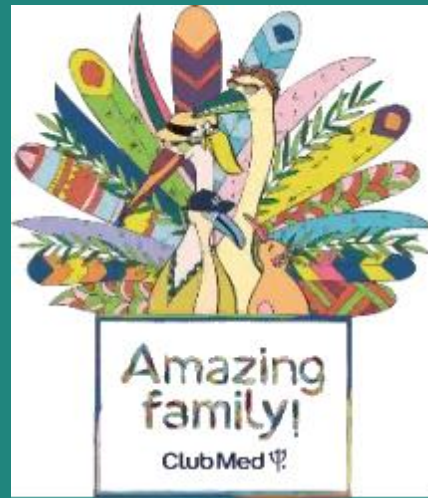
Professional children's space and scene, international G.O hosting and interaction, to create wonderful children's fun time, professional children's facilities and services combined with the presence of activities, through sports, games and performances, to carry out a series of new activities based on positive education, focusing on children's creativity, courage, confidence, cooperation, emotional connection, happiness six soft strength training.

### Business hours:

18:30-17:00

Business hours may be adjusted according to the situation on site, please refer to the information of the resort on the day of the event.





## Club Med 非凡家庭活动计划

一起运动

Time to Sports  
让我们一起动起来!



一起游戏

Time to Play  
让我们重温传统游戏的乐趣!



一起寻找

Time to Quest  
全家一起解锁谜题，寻找答案!



一起关爱

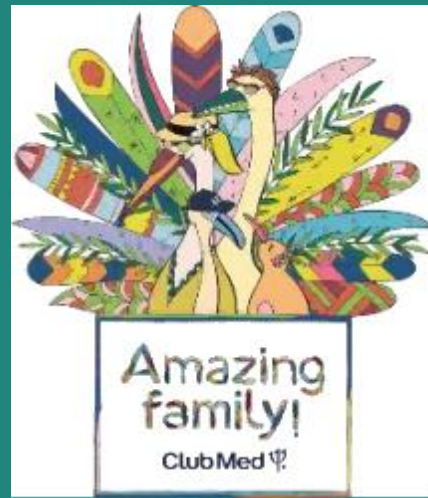
Time to Care  
让我们关爱彼此，保护自然!



一起庆祝

Time to Celebrate  
让我们尽情欢乐!





# Club Med Amazing Family!

**Time to Sports**  
Let's move together!

**Time to Play**  
Let's relive the fun of traditional games!



**Time to Quest**  
Unlock puzzles and find answers with whole family!

**Time to Care**  
Let's care for each other and protect nature!

**Time to Celebrate**  
Let's have fun!



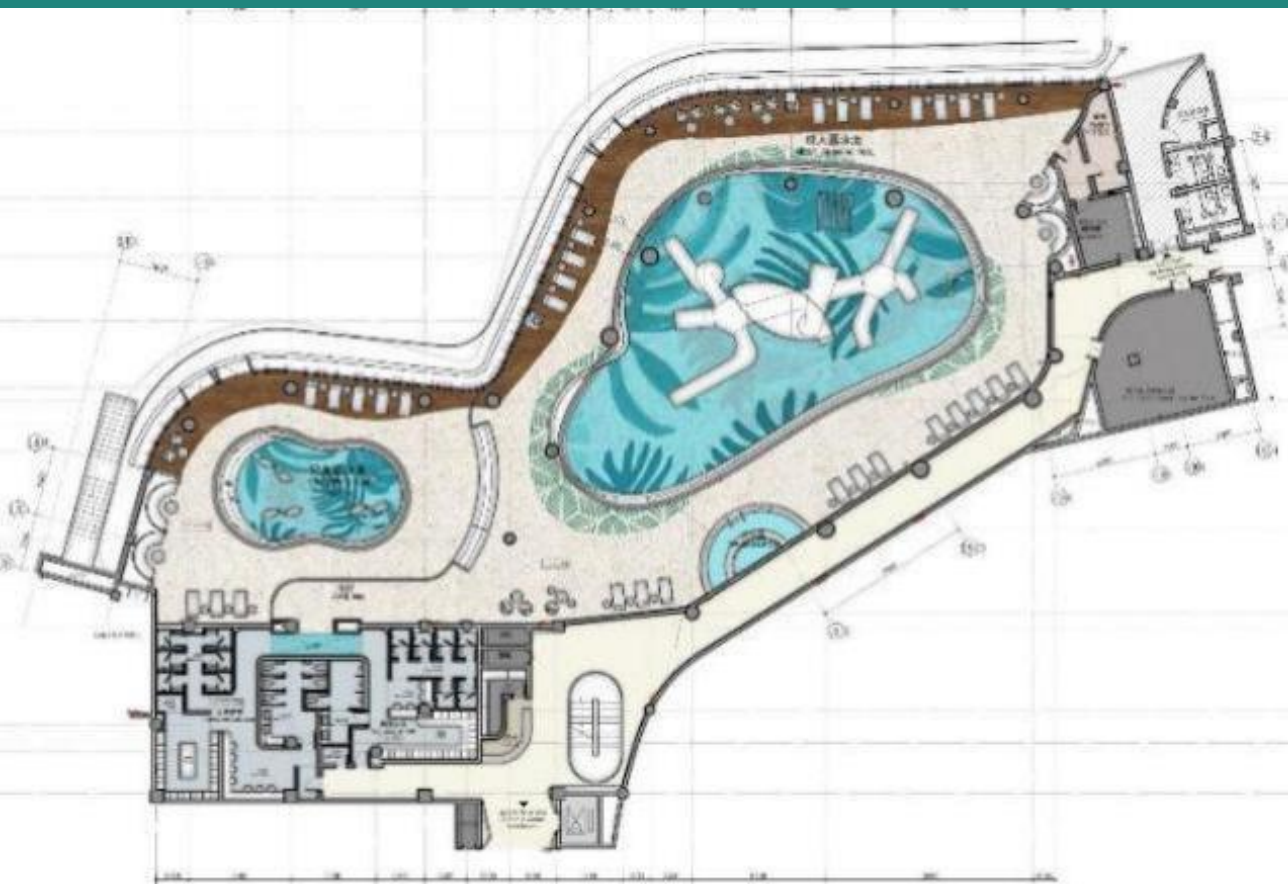
# 迷你水乐园

## Mini Waterland

位于暮云楼B2层，近1000平米的室内恒温迷你水乐园，适宜全年龄段的戏水趣味空间，设有滑梯、戏水池、儿童泳池及按摩池，一年四季都能让你释放无与伦比的快乐能量。

营业时间 10:00-22:00

\*营业时间可能会根据现场情况进行调整，请以度假村当天的信息为准



## Mini Waterland

Located on the B2 floor of Muyun Building, the nearly 1,000 square meters indoor heated water park is suitable for all ages to play in the water fun space, with slides, paddling pool, children's pool and Jacuzzi, which can let you release unparalleled happy energy all year round.

### Business meal periods and hours:

10:00-22:00

\*Business hours may be adjusted according to the situation on site, please refer to the information of the resort on the day of the event.





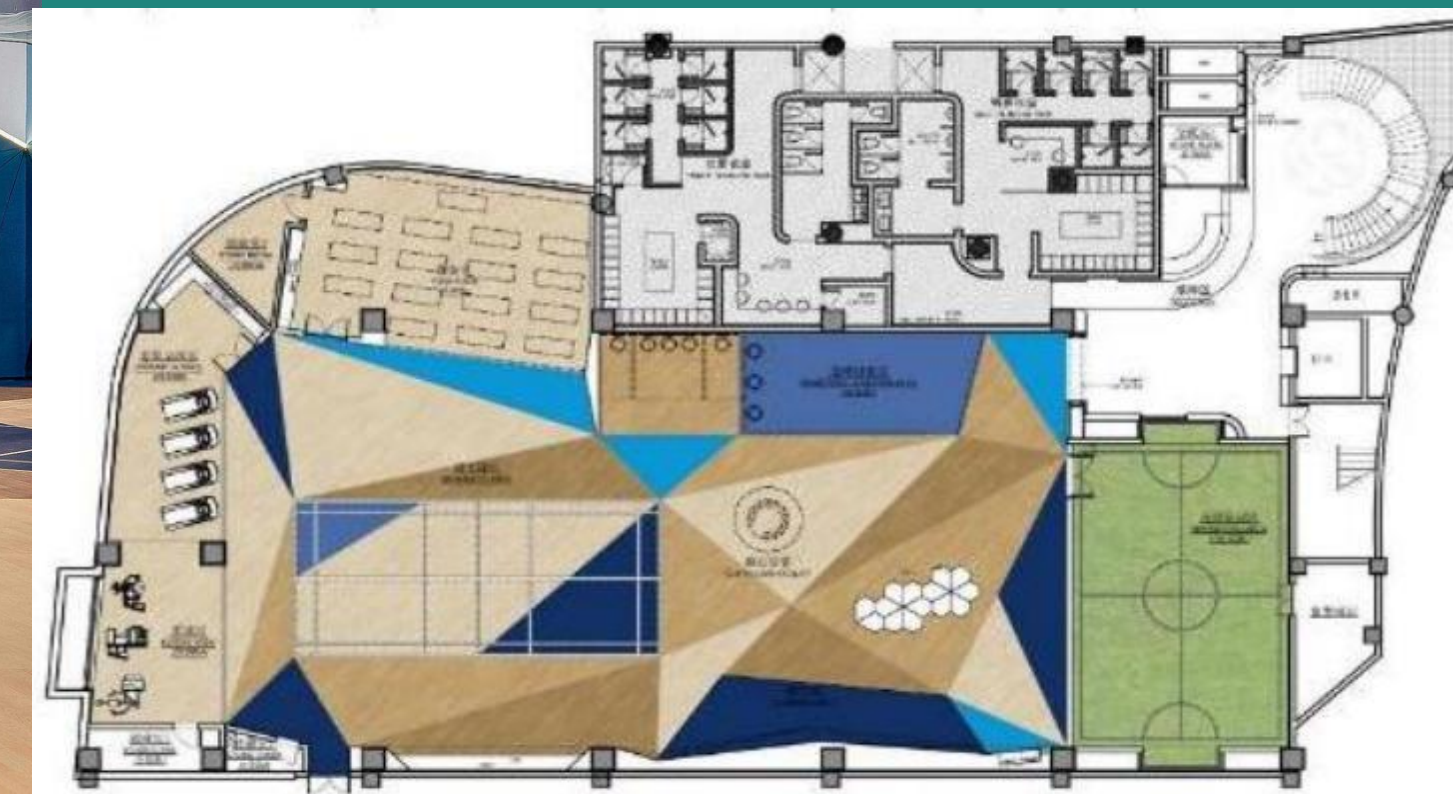
## 室内游戏中心 & 体育中心 Game Center & Sports Center

游戏中心位于酒店暮云楼1层，室内体育中心位于暮云楼B1层，适宜各年龄段宾客的室内运动游戏空间，室内运动中心设有羽毛球场、迷你足球、室内攀岩、瑜伽、器械室；搭配1层游戏中心的电子飞镖、VR游戏、台球、趣味桌游区域等，探索充满趣味的运动魅力及娱乐享受。

营业时间 09:00-12:00 14:00-17:30

\*部分场地使用可到夜间22:00

\*营业时间可能会根据现场情况进行调整，请以度假村当天的信息为准







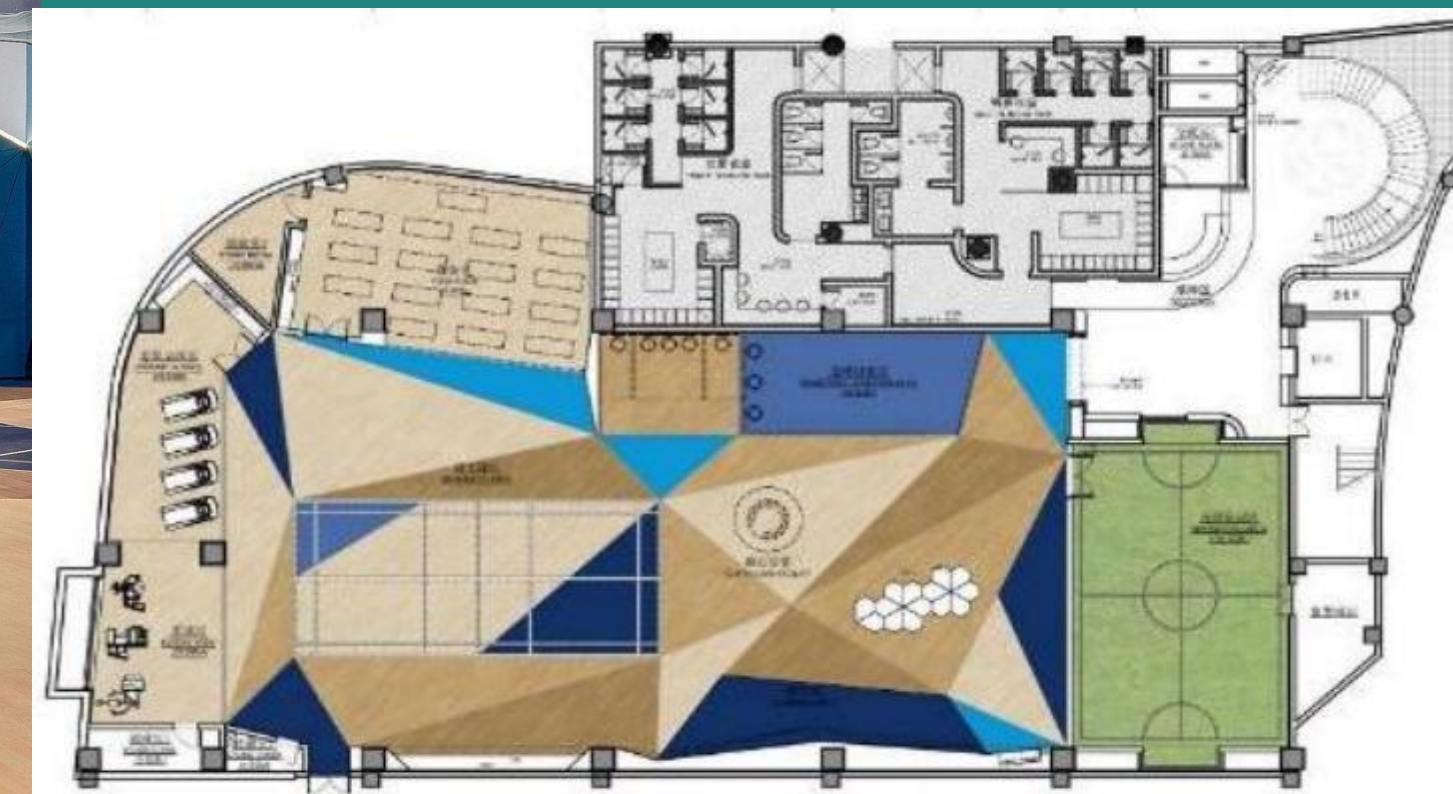
## Game Center & Sports Center

The Game Center is located on the 1st floor of the Mu Yun Building, and Indoor Recreational Area is located on the B1 floor of Mu Yun Building. Indoor Recreational Area is equipped with badminton court, mini-soccer, indoor climbing, yoga, and equipment room; together with the electronic darts, VR games, billiards, and fun table games area in the Game Center on the 1st floor, you can explore the charm of fun sports and enjoyment of entertainment.

### Business meal periods and hours:

09:00-12:00 14:00-17:30

\*Some venues can be used until 22:00 at night\*Business hours may be adjusted according to the situation on site, please refer to the information of the resort on the day of the event.



# 室外运动及娱乐

Outdoor Sports & Games

室外活动设有射箭场、童稚天地、户外泳池及儿童戏水池、林间采摘、村内漫步、骑行等丰富多彩的项目，让亲子家庭在阳光下释放运动的快乐。

\*营业时间可能会根据现场情况进行调整，请以度假村当天的信息为准。

户外无边泳池，位于度假村中心，区域开阔，设置成人区及家庭戏水区，与主酒吧宜吧及游戏中心相连，山水之间，可远眺龙泉山脉，近览园林风景，亦可沉浸于快乐管家G.O的互动演出，以敞开的感官享受世界，被快乐拥抱。

户外泳池水深：1.2米-1.65米  
家庭戏水池水深：1米

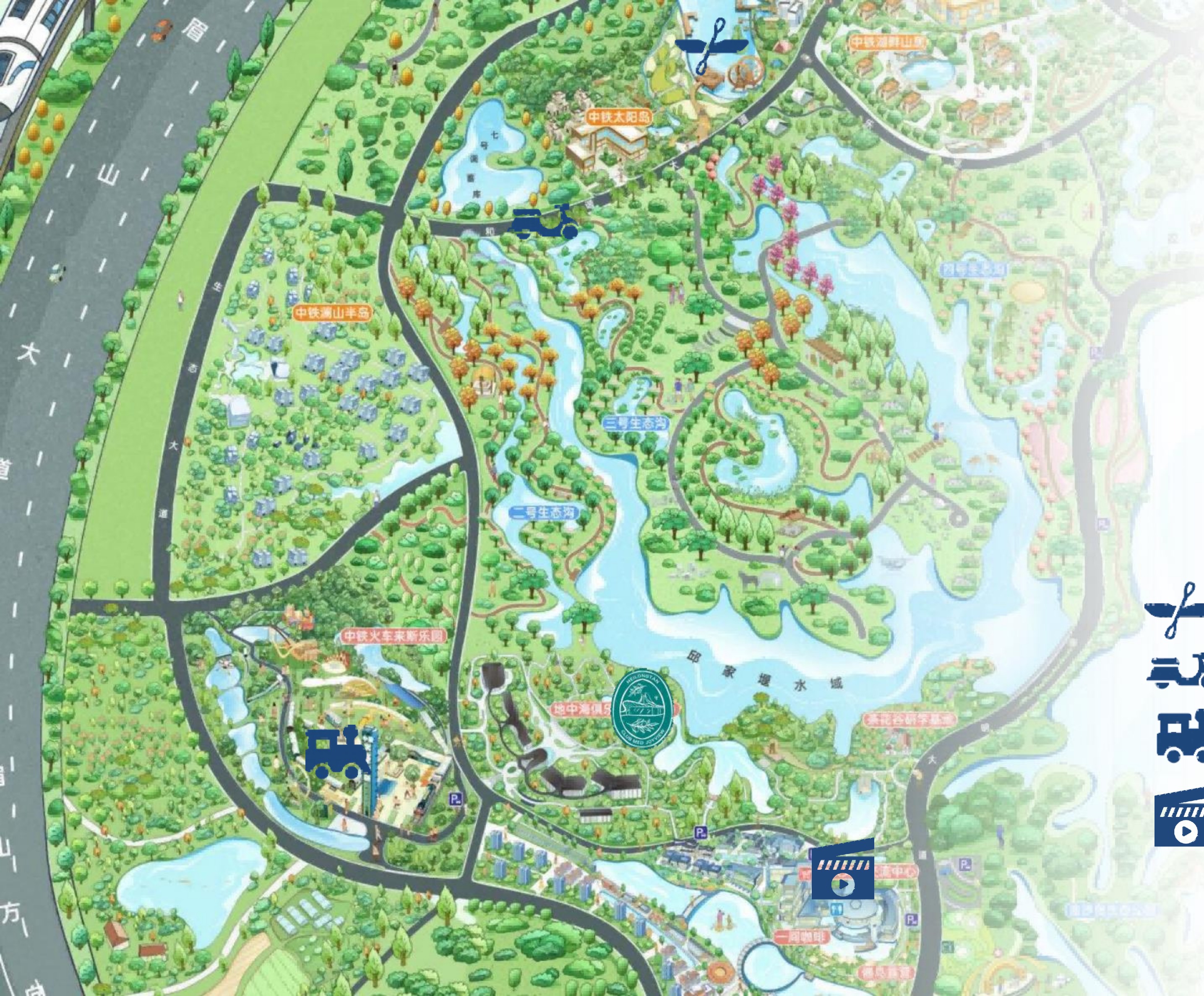


# Outdoor Sports & Games

Outdoor Activities Include Archery, Kids Playground, Outdoor Pool And Family Pool, Orchard, Resort Strolling, Biking And Other Colorful Activities, Empower Families To Revel In The Delight Of Outdoor Activities Bathed In Sunlight.

\* Opening hours may be adjusted according to the site conditions, please refer to the daily information.





## 中铁黑龙江国际旅游度假区

中铁黑龙江国际旅游度假区位于黑龙江镇光明大道，占地面积3.4万亩，中铁黑龙江是超大型综合度假区，让人在重拾乡趣森活的同时拥有城市级的配套，乐享美好度假生活



④ 水上运动（皮划艇，帆板）



④ 山地越野车



④ 火车来斯乐园



④ 5D影院



# CREC HEILONGTAN INTERNATIONAL TOURISM RESORT

Resort is located in Guangming Avenue of Heilongtan Town, covering an area of 3.4 million acres. Covering an area of 34,000 acres, CREC Heilongtan International Tourism Resort is a super-large integrated resort area, which allows people to enjoy a good vacation life with city-level facilities while regaining the fun of living in the countryside.

☉ Water sports (kayaking, windsurfing)



☉ Mountain all-terrain vehicles



☉ Nice Train



☉ 5D Cinema





## 火车来斯 (周边景点)

- 位于度假村正门对侧，步行3分钟直达
- 占地约200亩，已经开放的游乐项目有平凡之轨、火车彩虹滑道、来斯卡丁车、漂流船淘金池、摆尾车、电子飞碟、射击体验营
- 园区内设有七条各种不同风格、不同主题火车嘉年华乐园。乐园收集了全国各地退役而来火车车厢，沿途共设置十余处打卡互动体验点，2.2公里长的欢乐火车专列。由20节不同型号的火车车厢拼接、树立、搭设而成的火车积木乐园再现千与千寻动画片中唯美的水上火车；还原上个世纪对老火车站记忆的火车街区等特色项目。



## Nice Train (Surrounding Attractions)

- Located opposite the main entrance of the resort, a 3-minute walk away,
- Covering an area of approximately 200 acres, is an amusement park featuring various open attractions such as Ordinary Track, Rainbow Train Slide, Scardine Car, Drifting Boat Gold Panning Pool, Pendulum Car, UFO, and Shooting Experience Camp.
- The park features seven train carnival parks of various styles and themes. The park collects retired train carriages from all over the country and sets up more than ten interactive experience points along the way, with a 2.2-kilometre-long joyful train train. By 20 different types of train carriages splicing, set up, built into the train block paradise reproduces the beautiful water train in the animated film; restore the memory of the last century on the old railway station train block and other special projects.



## 中铁体育 公园 (周边设施)

- 距离度假村3km，度假村电瓶车可直接送达
- 四星级体育服务综合体项目
- 一站式满足室内外篮球、足球、羽毛球及网球的多种运动需求
- 5700m<sup>2</sup>室内综合运动馆，可满足大型团队拓展及羽毛球、篮球、搏击赛等赛事承办
- 配备户外生态跑道、篮球场、羽毛球场、乒乓球台、五人制足球场





# CREC Sports Center

(Surrounding Facilities)

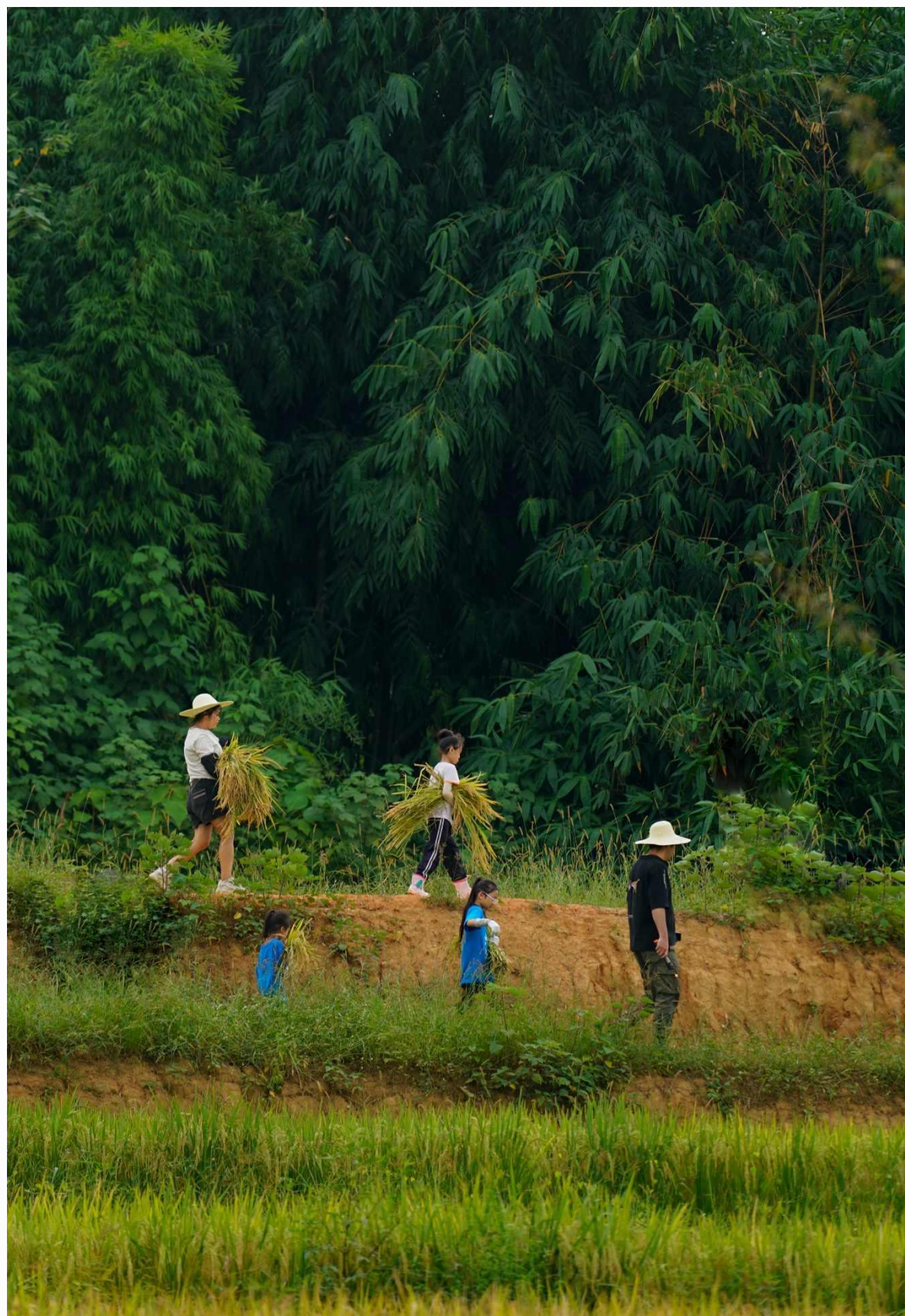


- 3km from the resort, with direct delivery by the resort's battery car
- Four-star sports service complex project
- One-stop solution for indoor and outdoor basketball, football, badminton and tennis.
- 5700 square metres indoor sports hall, can meet the large team development and badminton, basketball, wrestling tournament and other events hosting
- Equipped with outdoor ecological running track, basketball court, badminton court, table tennis court, five-a-side football field



## 诗里阡陌 (周边景点)

- 距离度假村8km
- 在自然中发现艺术之美，于森林间体验蓬勃生命力
- 占地面积十余亩，配备休闲娱乐项目、原生态农耕体验及自然研学。为您打造有机自然的团队拓展、亲子研学活动等创意活动。
- 设计灵感源自川西传统聚落形式“林盘”，多样的农业景观、珍珠散落般的水体池塘，共同围合出变幻莫测的自然山谷，为各年龄段、各行业的游人提供了漫步、嬉戏、休闲与社交的自然场所。置身于其中，沿阡陌前行，在曲折迂回之间体验充满自然诗意的节气疗愈之旅。



## Poetic Fields (Surrounding Attractions)

- 8km from the resort
- Discover the beauty of art in nature and the vitality of life in the forest.
- Covering an area of more than ten acres, it is equipped with leisure and entertainment programs, original farming experience and nature study. Creating organic and natural team development, family study activities and other creative activities for you.
- The design is inspired by the traditional settlement form of "Lin Pan" in western Sichuan, where a variety of agricultural landscapes and pearl-scattered water bodies and ponds together enclose an ever-changing natural valley, providing a natural place for visitors of all ages and professions to stroll, play, relax and socialize. As you walk along the paths, you will experience a natural and poetic healing journey between the twists and turns.



## 东坡故里 天府眉山（推荐旅游地）

### 眉州三苏祠博物馆

三苏祠，位于四川省眉山市东坡区，始建于北宋，现为清康熙四年（1665年）重建遗存，占地面积65000平方米，是北宋文学家苏洵、苏轼、苏辙父子三人的故居及祠堂。三苏祠为清代园林式文人祠堂，祠堂由前厅（古祠大门）、飨殿、启贤堂、来凤轩、东西厢房及廊构成三进四合院，在同一中轴线上，由南而北。东西厢房在左右均衡的基础上又有自由变化，从而形成不严整对称的格局。三苏祠是研究三苏及三苏文化的重要场所，是研究明清建筑艺术和园林艺术的重要实物范例。



# Meishan, Su Dongpo's hometown, the backyard of Chengdu (Recommended Site)

## Meizhou San Su Shrine Museum

San Su Shrine, located in Dongpo District, Meishan City, Sichuan Province, was originally built during the Northern Song Dynasty and rebuilt during the reign of Kangxi in the Qing Dynasty (1665). Covering an area of 65,000 square meters, it is the former residence and shrine of the Northern Song Dynasty literary figures Su Xun and his sons, Su Shi and Su Zhe.

San Su Shrine is a Qing Dynasty garden-style literary shrine, composed of the front hall (ancient shrine gate), main hall, Qixian Hall, Laifeng Pavilion, east and west wing rooms, and corridors, forming a three-entry courtyard on a north-south axis. The east and west wing rooms are symmetrically balanced with free variations, creating a layout that is not strictly symmetrical. San Su Shrine is an important place for studying the lives and culture of the three Sus, as well as a significant example of Ming and Qing architectural and garden art.



## 4 不可错过的体验 Must-try Experience

# Must-try

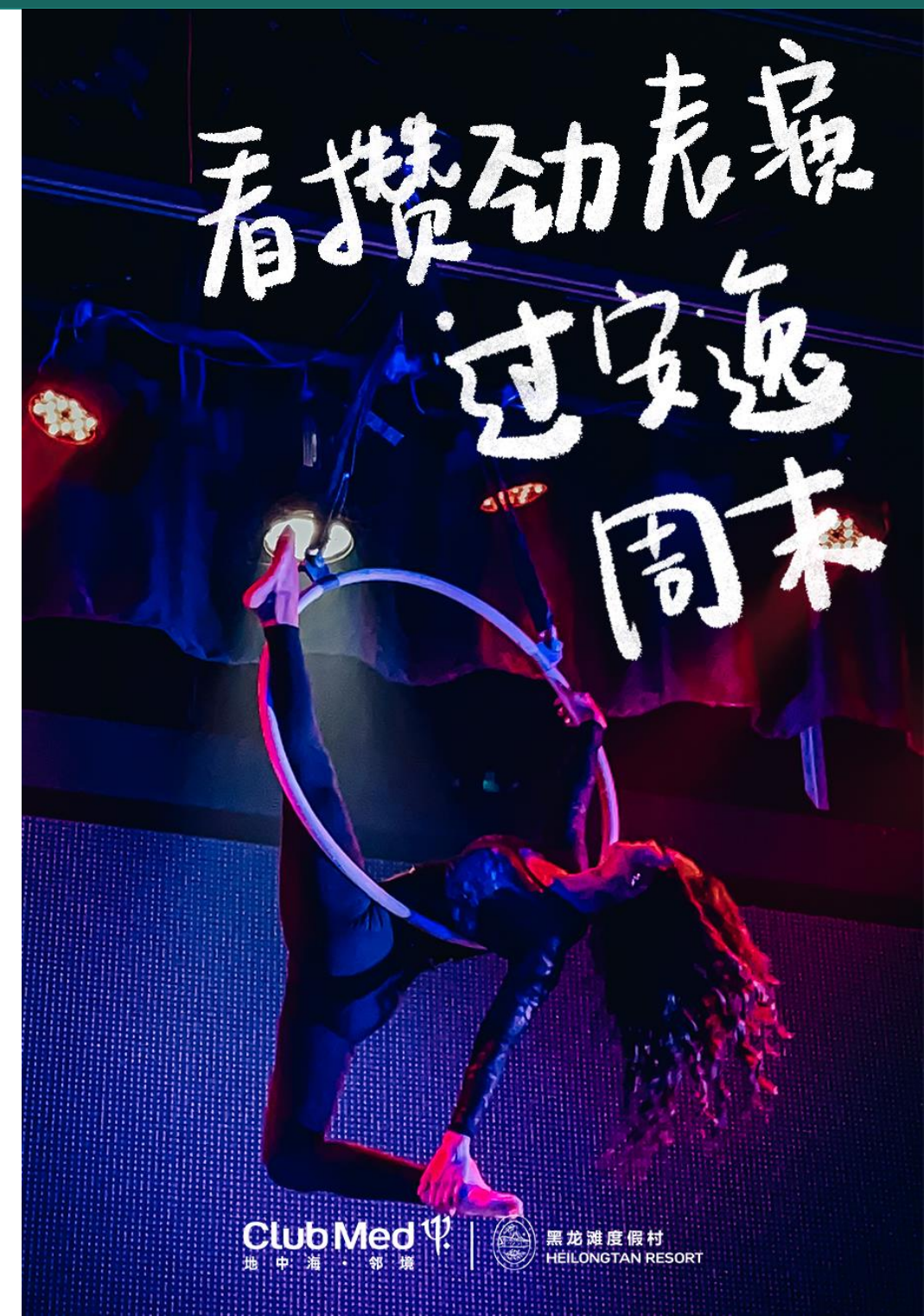


下午茶

活力水上桨板与皮划艇

小小自然探索官

特别主题夜活动



# Must-try



## Afternoon Tea



## Active Water Paddle Boarding and Kayaking



## Little Nature Explorer



## Special Theme Night Show





# *Must-try*



## 下午茶

悠享下午茶套餐，精选茶点搭配进口气泡酒，配合现场演奏的音乐轻柔环绕，营造沉浸优雅氛围，让每一刻都成为难忘回忆。如需要户外野餐，还可以为您精心准备野餐篮，装点您的户外野餐时光。



# *Must-try*



## Afternoon Tea

Enjoy the afternoon tea set, a selection of tea and imported sparkling wine, with live music gently surround, create immersion atmosphere makes every moment an unforgettable memory. If you need to picnic outdoors, also could be served a picnic basket for you to decorate your Outdoor picnic time.

# *Must-try*



## 活力水上桨板与皮划艇

在黑龙江寻求户外探险与水上的乐趣，体验桨板与皮划艇带给您的水上冒险之旅吧，沿途中还可以观察到素有“水中大熊猫”之称的桃花水母！



# *Must-try*



## **Active Water Paddle Boarding and Kayaking**

For outdoor adventure and water fun at Heilongtan, experience paddle boarding and kayaking for a water adventure and observe along the way Peach blossom jellyfish known as "giant panda in water"!



# Must-try

Ψ  
EXPERIENCE

## 小小自然探索官\*

随黑龙江四季更迭，每个季节展开一场自然奥秘的奇妙探险。炎夏之时，在资深G.O的带领下，变身小小科学家，亲赴湖畔，采水样、做实验，揭秘黑龙江清澈水质的秘密。金秋之际，步入生态湿地的绚烂画卷，邂逅多彩植物，感受生命的蓬勃。冬日见证候鸟迁徙的诗篇，体会生命的迁徙与轮回。春暖花开季，漫步薰衣草花田，还可以动手调制薰衣草香氛，制作香包与香皂，让这份清新与美好伴你归途，长久留存。

\*具体活动将根据季节性进行调整，并以度假村实际运营为准



# *Must-try*

Ψ  
EXPERIENCE

## Little Nature Explorer\*

With the four seasons of Heilongtan, a wonderful exploration of natural mysteries. In the hot summer, with senior G.O, transform into a small scientist, to the lake, collect water samples, do experiments, reveal the secret of the clear water quality of Heilongtan. In autumn, step into the gorgeous picture of ecological wetland, encounter colorful plants, and feel the vigorous life. Winter witness the poem of migratory birds migration, experience the migration and reincarnation of life. In the spring season, walk the lavender flower field, you can also make lavender fragrance, make sachet and soap.

\*Activities are subject to seasonal adjustments and are based on actual resort operations.



# Must-try

Ψ  
EXPERIENCE

## 特别主题夜活动

黑龙江度假村每周打造五场不同的主题夜活动，其中根据三星堆为灵感打造的「古蜀探秘」主题夜以及地中海·俱乐部首次在中国度假村上演的「魔幻几何秀」是你绝对不可错过的体验。前者结合历史、文化以及三星堆的未解之谜，带来精彩绝伦的体验；后者在现场表演中融合图像与几何概念，跟随日与夜的不同氛围演变，搭配视觉效果、美食、时尚及各类活动，带您领略一场全天候的感官盛宴。

\*主题安排以度假村现场运营为准，其中「古蜀探秘」与「魔幻几何秀」每周各上演一次



# *Must-try*



## Special Theme Night Show



Heilongtan Resort hosts five different themed night shows every week. Among these, the "Ancient Sichuan Culture Exploration Show" inspired by the Sanxingdui culture and the " Geometric Show" performed for the first time in a resort by Club Med in China, are experiences you absolutely cannot miss. The former combines history, culture, and the mysteries of Sanxingdui to deliver an extraordinary experience. The latter integrates images and geometric concepts in live performances, evolving with the different atmospheres of day and night. Accompanied by visual effects, gourmet food, fashion, and various activities, it offers you an all-day sensory feast.

\*The scheduling of themed events is subject to the resort's on-site operations. The "Ancient Sichuan Culture Exploration Show" and " Geometric Show" are each performed once a week.



# 自在湖畔 近享「法适」假期

——很法式 也很巴适



Hei! Show Time

- 特色饮品
- 宜吧主题秀
- 快乐G.O互动
- 户外泳池吧派对



晚餐

特色餐厅-花烛

品尝火锅美味



轻松时刻-宜吧

桌游休闲

轻食饮品, 充满能量



清晨 唤醒

村内漫步 森呼吸



早午餐

国际餐厅盎然

营养均衡, 活力充沛



下午 活力释放

室内运动场攀岩&户外射箭



傍晚

畅游迷你水乐园



# A Lakeshore Retreat Where French Charm Meets Chengdu Delight



## Hei! Show Time

- Specialty Drinks
- Joy bar Theme Show
- G.O Interactive
- Outdoor Poolside Party



supper  
Anthurium  
Taste the hot  
pot delicacy



Relaxing Moments - Joy  
Bar  
Board Games  
Light Food and drinks, full  
of energy



Early Morning  
Awakening  
Walking in the Resort  
forest with deep  
breathing



Brunch  
Blossom International  
Restaurant  
Nutritionally balanced and  
energizing



Afternoon Energize  
Indoor Rock Climbing &  
Outdoor Archery



Evening  
Swimming in the  
Mini Waterland





# Thank You!



地中海邻境·黑龙江度假村  
Club Med Joyview Heilongtan Resort  
中国四川省眉山市仁寿县黑龙滩镇茶林路888号 电话: +86 28 3678 8888  
No.888, Chalin Road, Heilongtan Town, Renshou District, Meishan City, Sichuan  
Province, China Tel: +86 28 3678 8888