



# Club Med Beidahu, Jilin of China - By Hong Kong Airlines

Prices are per person in Hong Kong Dollars and are valid from January 2019 to February 2019



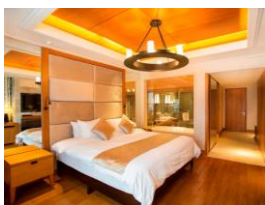
Club Med

## A Magic Winterland... ski and much more at Club Med Beidahu!

The direct flight will whisk you away to discover our easily-accessible snow wonderland.

At Club Med Beidahu, the magic of winter comes to life with 19 slopes catering to all levels of skiing and snowboarding. The magic continues off the mountains with our redesigned resort offering outdoor and indoor activities such as sledding, spa treatments and evening entertainment. The cuisine is equally breathtaking. After a hot chocolate and warm waffle on your return after ski lessons, you'll be delighted by the international and local flavours available at our all-day dining restaurants.

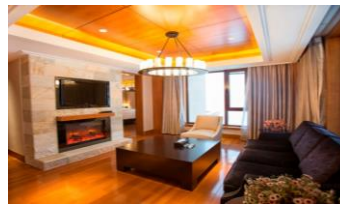
The Last minute Chinese new year will end on 15 January 2019, act fast and enjoy the following discounted prices!



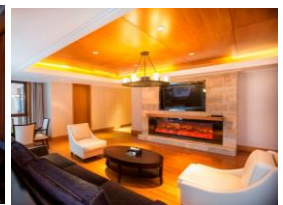
Deluxe Room - King Bed



Family Deluxe Room



Suite



Master Family Suite

### 31 Jan; 15 Feb - 16 Feb:

- 30% off on Land Stay per adult and child aged 4 to 11

### 01 Feb - 09 Feb:

- 40% off on Land Stay per adult and child aged 4 to 11

### 10 Feb - 13 Feb:

- 15% off on Land Stay per adult and child aged 4 to 11

### 14 Feb:

- 20% off on Land Stay per adult and child aged 4 to 11

### 17 Feb:

- 35% off on Land Stay per adult and child aged 4 to 11

### 21 Feb - 24 Feb:

- 45% off on Land Stay per adult and child aged 4 to 11

Discounted prices are as follows:



# Club Med Beidahu, Jilin of China - By Hong Kong Airlines

Prices are per person in Hong Kong Dollars and are valid from January 2019 to February 2019

## 4-Day 3-Night Air Package - Mon/Thu (Fixed Departure with Limited Seats)

| Departure dates : | Deluxe Room - Twin Beds / King Bed |             |            |           | Family Deluxe Room |             |            |           | Suite  |             |            |           | Master Family Suite (Former named Family Suite) |             |            |           |
|-------------------|------------------------------------|-------------|------------|-----------|--------------------|-------------|------------|-----------|--------|-------------|------------|-----------|---|-------------|------------|-----------|
|                   | Adult                              | Adult 12-17 | Child 4-11 | Child 2-3 | Adult              | Adult 12-17 | Child 4-11 | Child 2-3 | Adult  | Adult 12-17 | Child 4-11 | Child 2-3 | Adult   | Adult 12-17 | Child 4-11 | Child 2-3 |
| Feb 04            | 13,400                             | 11,672      | 9,794      | 4,610     | 16,766             | 14,372      | 11,828     | 4,610     | 20,132 | 17,072      | 13,844     | 4,610     | 24,920  | 20,888      | 16,706     | 4,610     |
| Feb 11            | 11,163                             | 9,608       | 7,902      | 3,210     | 14,198             | 12,030      | 9,713      | 3,210     | 17,232 | 14,478      | 11,549     | 3,210     | 21,542  | 17,921      | 14,124     | 3,210     |

## 5-Day 4-Night Air Package - Thu/Mon (Fixed Departure with Limited Seats)

| Departure dates : | Deluxe Room - Twin Beds / King Bed |             |            |           | Family Deluxe Room |             |            |           | Suite  |             |            |           | Master Family Suite (Former named Family Suite) |             |            |           |
|-------------------|------------------------------------|-------------|------------|-----------|--------------------|-------------|------------|-----------|--------|-------------|------------|-----------|---|-------------|------------|-----------|
|                   | Adult                              | Adult 12-17 | Child 4-11 | Child 2-3 | Adult              | Adult 12-17 | Child 4-11 | Child 2-3 | Adult  | Adult 12-17 | Child 4-11 | Child 2-3 | Adult   | Adult 12-17 | Child 4-11 | Child 2-3 |
| Jan 31            | 14,367                             | 12,394      | 10,259     | 4,290     | 18,238             | 15,487      | 12,586     | 4,290     | 22,097 | 18,580      | 14,895     | 4,290     | 27,611  | 22,981      | 18,194     | 4,290     |
| Feb 07            | 16,911                             | 14,665      | 12,268     | 5,520     | 21,289             | 18,172      | 14,906     | 5,520     | 25,666 | 21,688      | 17,534     | 5,520     | 31,891  | 26,652      | 21,254     | 5,520     |
| Feb 14            | 12,286                             | 10,507      | 8,577      | 3,210     | 15,530             | 13,107      | 10,527     | 3,210     | 19,233 | 16,073      | 12,755     | 3,210     | 24,193  | 20,044      | 15,716     | 3,210     |
| Feb 21            | 10,312                             | 8,926       | 7,390      | 3,210     | 12,446             | 10,642      | 8,677      | 3,210     | 15,724 | 13,260      | 10,646     | 3,210     | 19,596  | 16,362      | 12,956     | 3,210     |

### Transportation

Flight: Hong Kong - Changchun - Hong Kong by Hong Kong Airlines

Transfer between Changchun Longjia Airport and Club Med resort takes approximately 2 hours by coach.

Flight Schedule: Hong Kong - Changchun HX 422 1035-1505 (MON/THU)  
Changchun - Hong Kong HX 423 1600-2110 (MON/THU)

Tickets are valid for flight and date shown.  
\* Charter flight schedule subject to change.

### Package Price include

Round trip economy class air ticket • Coach Transfer • Accommodation on twin sharing basis • 3 meals daily • Open bar & snacking • Daily ski pass  
• Ski lift • Ski lesson of all levels • Children's clubs facilities • Evening entertainment

Club Med will try the best to provide the post updated package prices. However, all package prices listed are for reference only and are subject to change without prior notice. Please check with Club Med for the most up-to-date package prices.

**The package prices listed do not include ski wear and ski equipment rental fee.**

**The package prices listed do not include taxes & fuel surcharge, airport construction fee and security charges (total of HK\$665 per adult and HK\$432 per child aged under 12 years old). The final charges are subject to the date of full payment.**

### Deposit & Balance Payment

Deposit: 30% of package price  
Balance payment: 31 days prior to departure

### Cancellation & Revision Charges

Once the deposit paid, your reservation is considered definitive. All initial deposit made are non-refundable and non-transferable. Revision of departure date is allowed once 31 days before departure while air tickets have not been issued. An administration fee of HK\$300 per person per time is required for revision of date thereafter on top of the necessary administrative fee applied by the airlines, ferry and ground transportation company.

Cancellation and revision of booking may be made in writing or by telephone. In cases of late cancellation or revision, the following charges will apply:

\* 31 days or above prior to departure: 30% of total package fee + ticket cancellation penalty  
\* 30 - 15 days prior to departure: 70% of total package fee + ticket cancellation penalty  
\* 14 - 0 days prior to departure: 100% of total package fee

### Winter 2018-2019 Last minute Chinese new year - Terms and Conditions

Confirmation is subject to availability. Offer cannot be used in conjunction with any other promotions.

**All prices and terms are subject to change without prior notice.**

Club Med Beidahu welcome children from 2 years old.

### Petit Club Med

The Petit Club Med, for children aged 2 - 3 years, is available at an additional cost of HK\$490 per child per day. Petit Club Med can only be booked for the complete duration of your stay, not on a daily basis. Places are limited and subject to availability.

**All the above information are subject to change without prior notice.**

Club Med: Unit B, 26/F, Fortis Tower, 77-79 Gloucester Road, Wanchai, Hong Kong. Tel: 3111 9388 Website: www.clubmed.com.hk  
Licence No.: 350601

4-Jan-2019